

Product datasheet for **TA313541**

CACNG1 Rabbit Polyclonal Antibody

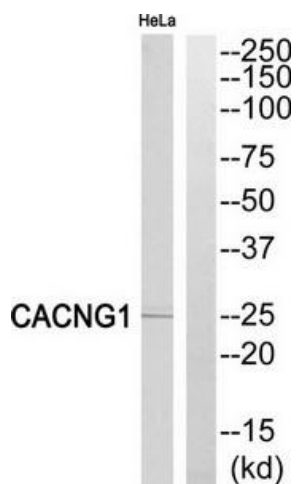
Product data:

Product Type:	Primary Antibodies
Applications:	WB
Recommended Dilution:	WB: 1:500~1:3000, ELISA: 1:5000
Reactivity:	Human, Mouse, Rat
Host:	Rabbit
Isotype:	IgG
Clonality:	Polyclonal
Immunogen:	The antiserum was produced against synthesized peptide derived from internal of human CACNG1.
Formulation:	Phosphate buffered saline (without Mg ²⁺ and Ca ²⁺), pH 7.4, 150mM NaCl, 0.02% sodium azide and 50% glycerol.
Concentration:	lot specific
Purification:	The antibody was affinity-purified from rabbit antiserum by affinity-chromatography using epitope-specific immunogen.
Conjugation:	Unconjugated
Storage:	Store at -20°C as received.
Stability:	Stable for 12 months from date of receipt.
Gene Name:	calcium voltage-gated channel auxiliary subunit gamma 1
Database Link:	NP_000718 Entrez Gene 12299 MouseEntrez Gene 29658 RatEntrez Gene 786 Human Q06432
Synonyms:	CACNLG
Note:	CACNG1 antibody detects endogenous levels of total CACNG1 protein.
Protein Families:	Druggable Genome, Ion Channels: Other, Transmembrane
Protein Pathways:	Arrhythmogenic right ventricular cardiomyopathy (ARVC), Cardiac muscle contraction, Dilated cardiomyopathy, Hypertrophic cardiomyopathy (HCM), MAPK signaling pathway



[View online »](#)

Product images:



Western blot analysis of extracts from HeLa cells, using CACNG1 antibody. The lane on the right is treated with the synthesized peptide.