

Product datasheet for **TA313536**

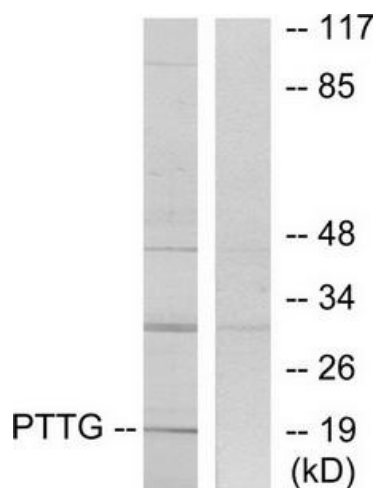
PTTG1IP Rabbit Polyclonal Antibody

Product data:

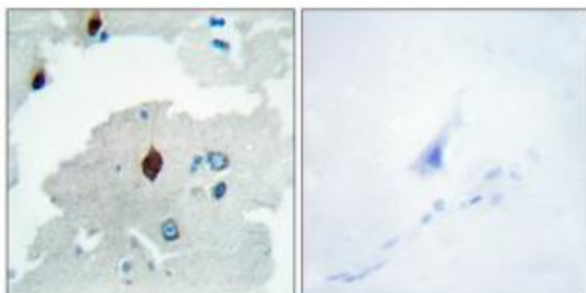
Product Type:	Primary Antibodies
Applications:	IHC, WB
Recommended Dilution:	WB: 1:500~1:3000, IHC: 1:50~1:100, ELISA: 1:10000
Reactivity:	Human, Mouse, Rat
Host:	Rabbit
Isotype:	IgG
Clonality:	Polyclonal
Immunogen:	The antiserum was produced against synthesized peptide derived from C-terminal of human PTTG.
Formulation:	Phosphate buffered saline (without Mg ²⁺ and Ca ²⁺), pH 7.4, 150mM NaCl, 0.02% sodium azide and 50% glycerol.
Concentration:	lot specific
Purification:	The antibody was affinity-purified from rabbit antiserum by affinity-chromatography using epitope-specific immunogen.
Conjugation:	Unconjugated
Storage:	Store at -20°C as received.
Stability:	Stable for 12 months from date of receipt.
Gene Name:	pituitary tumor-transforming 1 interacting protein
Database Link:	NP_004330 Entrez Gene 108705 MouseEntrez Gene 365548 RatEntrez Gene 754 Human P53801
Synonyms:	C21orf1; C21orf3; PBF
Note:	PTTG antibody detects endogenous levels of total PTTG protein.
Protein Families:	Druggable Genome, Transmembrane



[View online »](#)

Product images:

Western blot analysis of extracts from RAW264.7 cells, using PTTG antibody. The lane on the right is treated with the synthesized peptide.



Immunohistochemistry analysis of paraffin-embedded human brain tissue using PTTG antibody. The picture on the right is treated with the synthesized peptide.