

Product datasheet for **TA313533**

Complement Component 6 (C6) Rabbit Polyclonal Antibody

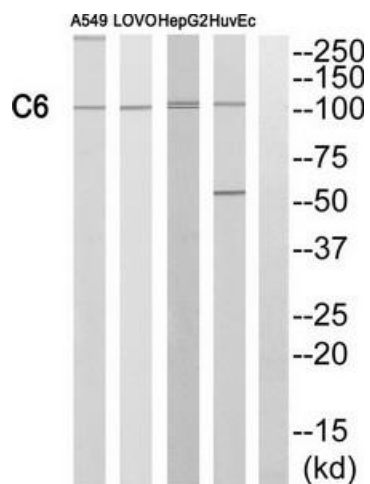
Product data:

Product Type:	Primary Antibodies
Applications:	IHC, WB
Recommended Dilution:	WB: 1:500~1:3000, IHC: 1:50~1:100, ELISA: 1:40000
Reactivity:	Human, Rat
Host:	Rabbit
Isotype:	IgG
Clonality:	Polyclonal
Immunogen:	The antiserum was produced against synthesized peptide derived from internal of human C6.
Formulation:	Phosphate buffered saline (without Mg ²⁺ and Ca ²⁺), pH 7.4, 150mM NaCl, 0.02% sodium azide and 50% glycerol.
Concentration:	lot specific
Purification:	The antibody was affinity-purified from rabbit antiserum by affinity-chromatography using epitope-specific immunogen.
Conjugation:	Unconjugated
Storage:	Store at -20°C as received.
Stability:	Stable for 12 months from date of receipt.
Gene Name:	complement component 6
Database Link:	NP_000056 Entrez Gene 24237 Rat Entrez Gene 729 Human P13671
Synonyms:	complement component 6; OTTHUMP00000120010
Note:	C6 antibody detects endogenous levels of total C6 protein.
Protein Families:	Druggable Genome, Secreted Protein
Protein Pathways:	Complement and coagulation cascades, Prion diseases, Systemic lupus erythematosus

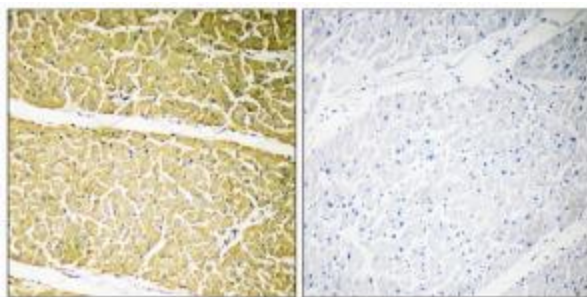


[View online »](#)

Product images:



Western blot analysis of extracts from A549 cells, LOVO cells and HepG2 cells, using C6 antibody. The lane on the right is treated with the synthesized peptide.



Immunohistochemistry analysis of paraffin-embedded human heart tissue, using C6 antibody. The picture on the right is treated with the synthesized peptide.