

Product datasheet for **TA313529**

GC1q R (C1QBP) Rabbit Polyclonal Antibody

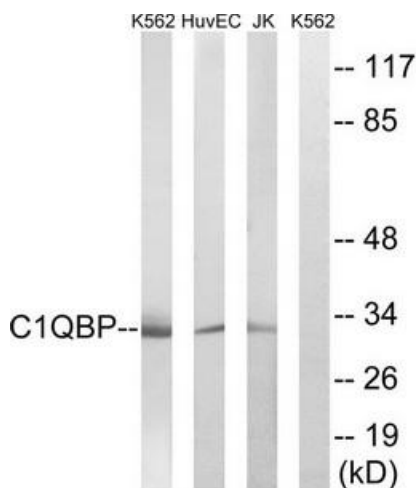
Product data:

| | |
|-----------------------|--|
| Product Type: | Primary Antibodies |
| Applications: | IHC, WB |
| Recommended Dilution: | WB: 1:500~1:3000, IHC: 1:50~1:100, ELISA: 1:40000 |
| Reactivity: | Human, Mouse, Rat |
| Host: | Rabbit |
| Isotype: | IgG |
| Clonality: | Polyclonal |
| Immunogen: | The antiserum was produced against synthesized peptide derived from internal of human C1QBP. |
| Formulation: | Phosphate buffered saline (without Mg ²⁺ and Ca ²⁺), pH 7.4, 150mM NaCl, 0.02% sodium azide and 50% glycerol. |
| Concentration: | lot specific |
| Purification: | The antibody was affinity-purified from rabbit antiserum by affinity-chromatography using epitope-specific immunogen. |
| Conjugation: | Unconjugated |
| Storage: | Store at -20°C as received. |
| Stability: | Stable for 12 months from date of receipt. |
| Gene Name: | complement component 1, q subcomponent binding protein |
| Database Link: | NP_001203 Entrez Gene 12261 MouseEntrez Gene 29681 RatEntrez Gene 708 Human Q07021 |
| Synonyms: | gC1Q-R; GC1QBP; gC1qR; HABP1; p32; SF2p32 |
| Note: | C1QBP antibody detects endogenous levels of total C1QBP protein. |

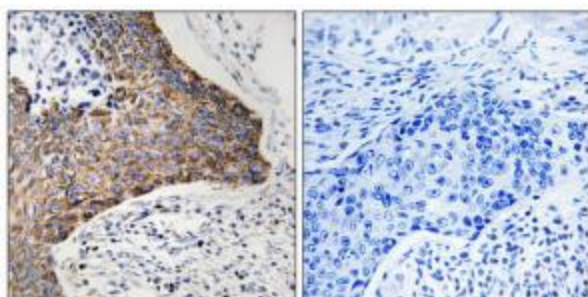


[View online »](#)

Product images:



Western blot analysis of extracts from Jurkat cells, K562 cells and HUVEC cells, using C1QBP antibody. The lane on the right is treated with the synthesized peptide.



Immunohistochemistry analysis of paraffin-embedded human tonsil tissue, using C1QBP antibody. The picture on the right is treated with the synthesized peptide.