

## Product datasheet for **TA313527**

### Bone marrow stromal cell antigen 1 (BST1) Rabbit Polyclonal Antibody

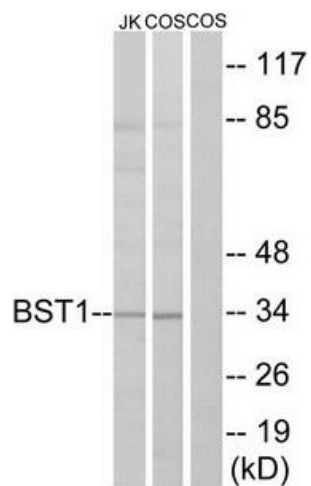
#### Product data:

Product Type:	Primary Antibodies
Applications:	WB
Recommended Dilution:	WB: 1:500~1:3000, ELISA: 1:5000
Reactivity:	Human, Mouse, Rat
Host:	Rabbit
Isotype:	IgG
Clonality:	Polyclonal
Immunogen:	The antiserum was produced against synthesized peptide derived from internal of human BST1.
Formulation:	Phosphate buffered saline (without Mg <sup>2+</sup> and Ca <sup>2+</sup> ), pH 7.4, 150mM NaCl, 0.02% sodium azide and 50% glycerol.
Concentration:	lot specific
Purification:	The antibody was affinity-purified from rabbit antiserum by affinity-chromatography using epitope-specific immunogen.
Conjugation:	Unconjugated
Storage:	Store at -20°C as received.
Stability:	Stable for 12 months from date of receipt.
Gene Name:	bone marrow stromal cell antigen 1
Database Link:	<a href="#">NP_004325</a> <a href="#">Entrez Gene 12182 MouseEntrez Gene 81506 RatEntrez Gene 683 Human Q10588</a>
Synonyms:	CD157
Note:	BST1 antibody detects endogenous levels of total BST1 protein.
Protein Families:	Transmembrane
Protein Pathways:	Calcium signaling pathway, Metabolic pathways, Nicotinate and nicotinamide metabolism



[View online »](#)

## Product images:



Western blot analysis of extracts from Jurkat cells and COS cells, using BST1 antibody. The lane on the right is treated with the synthesized peptide.