

## Product datasheet for **TA313524**

### **TIS11D (ZFP36L2) Rabbit Polyclonal Antibody**

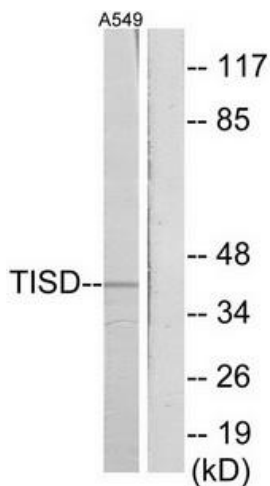
#### **Product data:**

<b>Product Type:</b>	Primary Antibodies
<b>Applications:</b>	WB
<b>Recommended Dilution:</b>	WB: 1:500~1:3000, ELISA: 1:20000
<b>Reactivity:</b>	Human, Mouse
<b>Host:</b>	Rabbit
<b>Isotype:</b>	IgG
<b>Clonality:</b>	Polyclonal
<b>Immunogen:</b>	The antiserum was produced against synthesized peptide derived from internal of human TISD
<b>Formulation:</b>	Phosphate buffered saline (without Mg <sup>2+</sup> and Ca <sup>2+</sup> ), pH 7.4, 150mM NaCl, 0.02% sodium azide and 50% glycerol.
<b>Concentration:</b>	lot specific
<b>Purification:</b>	The antibody was affinity-purified from rabbit antiserum by affinity-chromatography using epitope-specific immunogen.
<b>Conjugation:</b>	Unconjugated
<b>Storage:</b>	Store at -20°C as received.
<b>Stability:</b>	Stable for 12 months from date of receipt.
<b>Gene Name:</b>	ZFP36 ring finger protein-like 2
<b>Database Link:</b>	<a href="#">NP_008818</a> <a href="#">Entrez Gene 12193 Mouse</a> <a href="#">Entrez Gene 678 Human</a> <a href="#">P47974</a>
<b>Synonyms:</b>	BRF2; ERF-2; ERF2; RNF162C; TIS11D
<b>Note:</b>	TISD antibody detects endogenous levels of total TISD protein.
<b>Protein Families:</b>	Transcription Factors

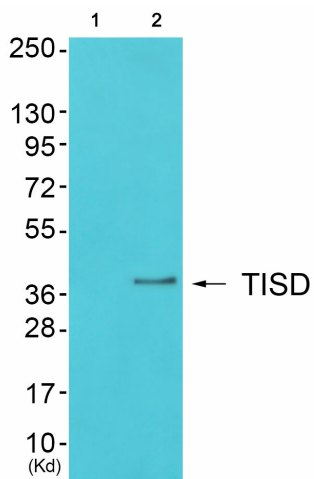


[View online »](#)

Product images:



Western blot analysis of extracts from A549 cells, using TISD antibody. The lane on the right is treated with the synthesized peptide.



Western blot analysis of extracts from 3T3 cells (Lane 2), using TISD Antibody. The lane on the left is treated with synthesized peptide.