

## Product datasheet for **TA313521**

### BRCA2 Rabbit Polyclonal Antibody

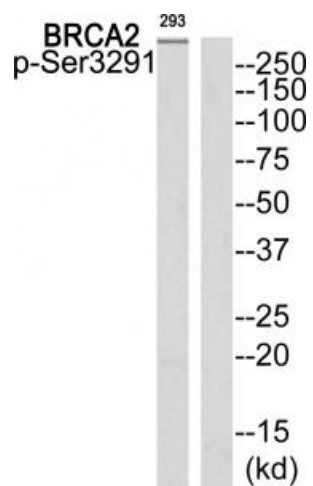
#### Product data:

Product Type:	Primary Antibodies
Applications:	WB
Recommended Dilution:	WB: 1:500~1:3000, ELISA: 1:10000
Reactivity:	Human, Mouse, Rat
Modifications:	Phospho-specific
Host:	Rabbit
Isotype:	IgG
Clonality:	Polyclonal
Immunogen:	The antiserum was produced against synthesized phosphopeptide derived from human BRCA2 around the phosphorylation site of serine 3291.
Formulation:	Phosphate buffered saline (without Mg <sup>2+</sup> and Ca <sup>2+</sup> ), pH 7.4, 150mM NaCl, 0.02% sodium azide and 50% glycerol.
Concentration:	lot specific
Purification:	The antibody was affinity-purified from rabbit antiserum by affinity-chromatography using epitope-specific immunogen.
Conjugation:	Unconjugated
Storage:	Store at -20°C as received.
Stability:	Stable for 12 months from date of receipt.
Gene Name:	BRCA2, DNA repair associated
Database Link:	<a href="#">NP_000050</a> <a href="#">Entrez Gene 12190 Mouse</a> <a href="#">Entrez Gene 360254 Rat</a> <a href="#">Entrez Gene 675 Human</a> <a href="#">P51587</a>
Synonyms:	BRCC2; BROVCA2; FACD; FAD; FAD1; FANCD; FANCD1; GLM3; PNCA2; XRCC11
Note:	BRCA2 (Phospho-Ser3291) antibody detects endogenous levels of BRCA2 only when phosphorylated at serine 3291.
Protein Families:	Druggable Genome
Protein Pathways:	Homologous recombination, Pancreatic cancer, Pathways in cancer



[View online »](#)

## Product images:



Western blot analysis of extracts from 293 cells, using BRCA2 (Phospho-Ser3291) antibody. The lane on the right is treated with the synthesized peptide.