

Product datasheet for **TA313520**

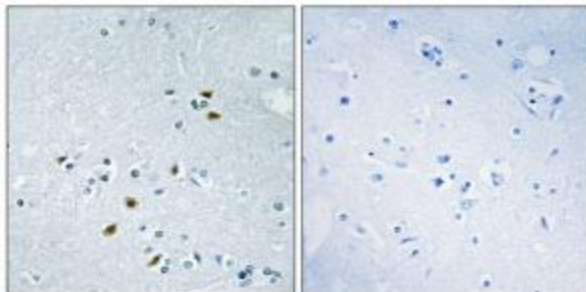
BRCA2 Rabbit Polyclonal Antibody

Product data:

Product Type:	Primary Antibodies
Applications:	IHC, WB
Recommended Dilution:	IHC: 1:50~1:100, ELISA: 1:20000
Reactivity:	Human, Rat
Host:	Rabbit
Isotype:	IgG
Clonality:	Polyclonal
Immunogen:	The antiserum was produced against synthesized peptide derived from N-terminal of human BRCA2.
Formulation:	Phosphate buffered saline (without Mg ²⁺ and Ca ²⁺), pH 7.4, 150mM NaCl, 0.02% sodium azide and 50% glycerol.
Concentration:	lot specific
Purification:	The antibody was affinity-purified from rabbit antiserum by affinity-chromatography using epitope-specific immunogen.
Conjugation:	Unconjugated
Storage:	Store at -20°C as received.
Stability:	Stable for 12 months from date of receipt.
Gene Name:	BRCA2, DNA repair associated
Database Link:	NP_000050 Entrez Gene 360254 RatEntrez Gene 675 Human P51587
Synonyms:	BRCC2; BROVCA2; FACD; FAD; FAD1; FANCD; FANCD1; GLM3; PNCA2; XRCC11
Note:	BRCA2 antibody detects endogenous levels of total BRCA2 protein.
Protein Families:	Druggable Genome
Protein Pathways:	Homologous recombination, Pancreatic cancer, Pathways in cancer



[View online »](#)

Product images:

Immunohistochemistry analysis of paraffin-embedded human brain tissue, using BRCA2 antibody. The picture on the right is treated with the synthesized peptide.