

Product datasheet for **TA313518**

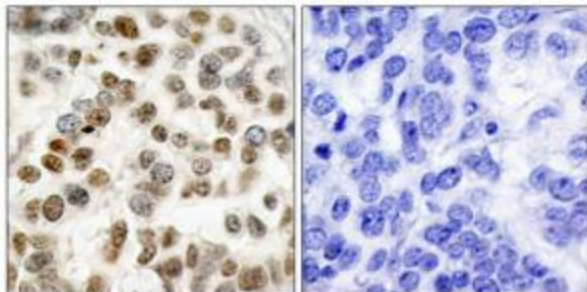
BRCA1 Rabbit Polyclonal Antibody

Product data:

| | |
|-----------------------|---|
| Product Type: | Primary Antibodies |
| Applications: | IHC |
| Recommended Dilution: | IHC: 1:50~1:100, ELISA: 1:4000 |
| Reactivity: | Human |
| Host: | Rabbit |
| Isotype: | IgG |
| Clonality: | Polyclonal |
| Immunogen: | The antiserum was produced against synthesized non-phosphopeptide derived from human BRCA1 around the phosphorylation site of serine 1423 (H-G-SP-Q-P). |
| Formulation: | Phosphate buffered saline (without Mg ²⁺ and Ca ²⁺), pH 7.4, 150mM NaCl, 0.02% sodium azide and 50% glycerol. |
| Concentration: | lot specific |
| Purification: | The antibody was affinity-purified from rabbit antiserum by affinity-chromatography using epitope-specific immunogen. |
| Conjugation: | Unconjugated |
| Storage: | Store at -20°C as received. |
| Stability: | Stable for 12 months from date of receipt. |
| Gene Name: | BRCA1, DNA repair associated |
| Database Link: | NP_009225 Entrez Gene 672 Human P38398 |
| Synonyms: | BRCAI; BRCC1; BROVCA1; FANCS; IRIS; PNCA4; PPP1R53; PSCP; RNF53 |
| Note: | BRCA1 (Ab-1423) antibody detects endogenous levels of total BRCA1 protein. |
| Protein Families: | Druggable Genome, Transcription Factors |
| Protein Pathways: | Ubiquitin mediated proteolysis |



[View online »](#)

Product images:

Immunohistochemistry analysis of paraffin-embedded human breast carcinoma tissue, using BRCA1 (Ab-1423) Antibody. The picture on the right is treated with the synthesized peptide.