

Product datasheet for **TA313512**

BMP8B Rabbit Polyclonal Antibody

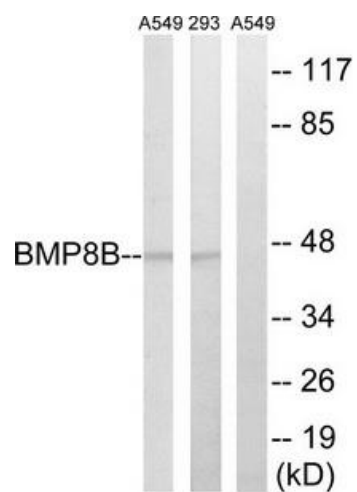
Product data:

Product Type:	Primary Antibodies
Applications:	WB
Recommended Dilution:	WB: 1:500~1:3000, ELISA: 1:40000
Reactivity:	Human
Host:	Rabbit
Isotype:	IgG
Clonality:	Polyclonal
Immunogen:	The antiserum was produced against synthesized peptide derived from internal of human BMP8B.
Formulation:	Phosphate buffered saline (without Mg ²⁺ and Ca ²⁺), pH 7.4, 150mM NaCl, 0.02% sodium azide and 50% glycerol.
Concentration:	lot specific
Purification:	The antibody was affinity-purified from rabbit antiserum by affinity-chromatography using epitope-specific immunogen.
Conjugation:	Unconjugated
Storage:	Store at -20°C as received.
Stability:	Stable for 12 months from date of receipt.
Gene Name:	bone morphogenetic protein 8b
Database Link:	NP_001711 Entrez Gene 656 Human P34820
Synonyms:	BMP8; OP2
Note:	BMP8B antibody detects endogenous levels of total BMP8B protein.
Protein Families:	Adult stem cells, Cancer stem cells, Druggable Genome, Embryonic stem cells, ES Cell Differentiation/IPS, Induced pluripotent stem cells, Secreted Protein, Stem cell relevant signaling - TGFb/BMP signaling pathway
Protein Pathways:	Hedgehog signaling pathway, TGF-beta signaling pathway



[View online »](#)

Product images:



Western blot analysis of extracts from 293 cells and A549 cells, using BMP8B antibody. The lane on the right is treated with the synthesized peptide.