

## Product datasheet for **TA313504**

### Complement factor B (CFB) Rabbit Polyclonal Antibody

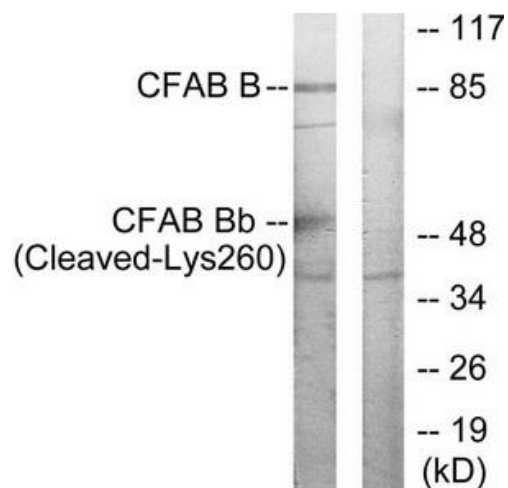
#### Product data:

Product Type:	Primary Antibodies
Applications:	WB
Recommended Dilution:	WB: 1:500~1:3000, ELISA: 1:20000
Reactivity:	Human, Mouse
Host:	Rabbit
Isotype:	IgG
Clonality:	Polyclonal
Immunogen:	The antiserum was produced against synthesized peptide derived from human CFAB Bb.
Formulation:	Phosphate buffered saline (without Mg <sup>2+</sup> and Ca <sup>2+</sup> ), pH 7.4, 150mM NaCl, 0.02% sodium azide and 50% glycerol.
Concentration:	lot specific
Purification:	The antibody was affinity-purified from rabbit antiserum by affinity-chromatography using epitope-specific immunogen.
Conjugation:	Unconjugated
Storage:	Store at -20°C as received.
Stability:	Stable for 12 months from date of receipt.
Gene Name:	complement factor B
Database Link:	<a href="#">NP_001701</a> <a href="#">Entrez Gene 14962 Mouse</a> <a href="#">Entrez Gene 629 Human</a> <a href="#">P00751</a>
Synonyms:	AHUS4; ARMD14; BF; BFD; CFAB; CFBD; FB; FBI12; GBG; H2-Bf; PBF2
Note:	CFAB Bb (Cleaved-Lys260) antibody detects endogenous levels of fragment of activated CFAB Bb resulting from cleavage adjacent to Lys260.
Protein Families:	Druggable Genome, Protease, Secreted Protein
Protein Pathways:	Complement and coagulation cascades



[View online »](#)

## Product images:



Western blot analysis of extracts from K562 cells, treated with etoposide (25uM, 1 hour), using CFAB Bb (Cleaved-Lys260) antibody. The lane on the right is treated with the synthesized peptide.