

## Product datasheet for **TA313502**

### BCR Rabbit Polyclonal Antibody

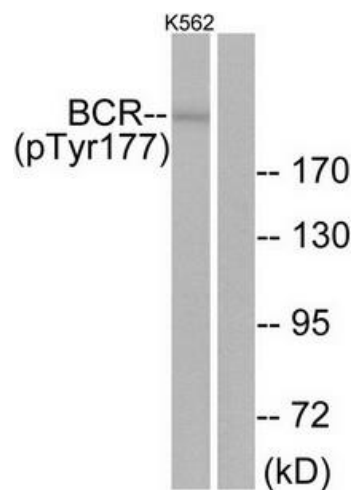
#### Product data:

Product Type:	Primary Antibodies
Applications:	WB
Recommended Dilution:	WB: 1:500~1:3000, ELISA: 1:10000
Reactivity:	Human, Mouse
Modifications:	Phospho-specific
Host:	Rabbit
Isotype:	IgG
Clonality:	Polyclonal
Immunogen:	The antiserum was produced against synthesized phosphopeptide derived from human Bcr around the phosphorylation site of tyrosine177 (P-F-YP-V-N).
Formulation:	Phosphate buffered saline (without Mg <sup>2+</sup> and Ca <sup>2+</sup> ), pH 7.4, 150mM NaCl, 0.02% sodium azide and 50% glycerol.
Concentration:	lot specific
Purification:	The antibody was affinity-purified from rabbit antiserum by affinity-chromatography using epitope-specific immunogen.
Conjugation:	Unconjugated
Storage:	Store at -20°C as received.
Stability:	Stable for 12 months from date of receipt.
Gene Name:	BCR, RhoGEF and GTPase activating protein
Database Link:	<a href="#">NP_004318</a> <a href="#">Entrez Gene 110279 Mouse</a> <a href="#">Entrez Gene 613 Human</a> <a href="#">P11274</a>
Synonyms:	ALL; BCR1; CML; D22S11; D22S662; PHL
Note:	Bcr (phospho-Tyr177) antibody detects endogenous levels of Bcr only when phosphorylated at tyrosine 177.
Protein Families:	Druggable Genome, Protein Kinase
Protein Pathways:	Chronic myeloid leukemia, Pathways in cancer



[View online »](#)

## Product images:



Western blot analysis of extracts from K562 cells, using Bcr (phospho-Tyr177) antibody (Line 1 and 2). The lane on the right is treated with the synthesized peptide.