

Product datasheet for **TA313499**

BARD1 Rabbit Polyclonal Antibody

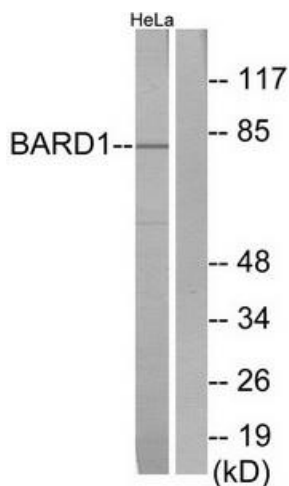
Product data:

Product Type:	Primary Antibodies
Applications:	WB
Recommended Dilution:	WB: 1:500~1:3000, ELISA: 1:5000
Reactivity:	Human
Host:	Rabbit
Isotype:	IgG
Clonality:	Polyclonal
Immunogen:	The antiserum was produced against synthesized peptide derived from N-terminal of human BARD1.
Formulation:	Phosphate buffered saline (without Mg ²⁺ and Ca ²⁺), pH 7.4, 150mM NaCl, 0.02% sodium azide and 50% glycerol.
Concentration:	lot specific
Purification:	The antibody was affinity-purified from rabbit antiserum by affinity-chromatography using epitope-specific immunogen.
Conjugation:	Unconjugated
Storage:	Store at -20°C as received.
Stability:	Stable for 12 months from date of receipt.
Gene Name:	BRCA1 associated RING domain 1
Database Link:	NP_000456 Entrez Gene 580 Human Q99728
Synonyms:	BRCA1 associated RING domain 1; BRCA1-associated RING domain 1; BRCA1-associated RING domain gene 1
Note:	BARD1 antibody detects endogenous levels of total BARD1 protein.
Protein Families:	Druggable Genome



[View online »](#)

Product images:



Western blot analysis of extracts from HeLa cells, using BARD1 antibody. The lane on the right is treated with the synthesized peptide.

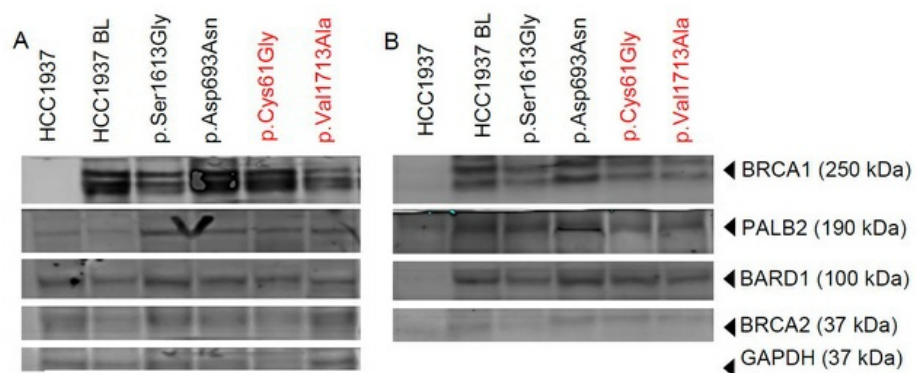


Figure from citation: Co-immunoprecipitation Western blot analysis of proteins from different cell lines using BRCA1 pulldown and probing with anti-BRCA1, PALB2, BARD1, and BRCA2 antibodies. [View Citation](#)