

Product datasheet for **TA313497**

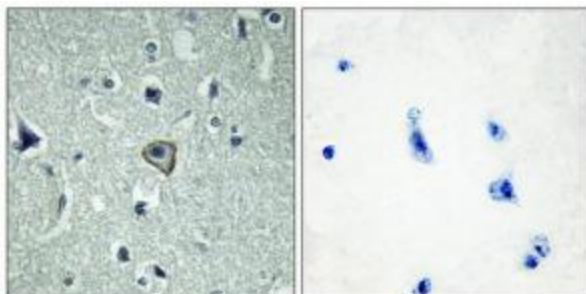
BAI2 (ADGRB2) Rabbit Polyclonal Antibody

Product data:

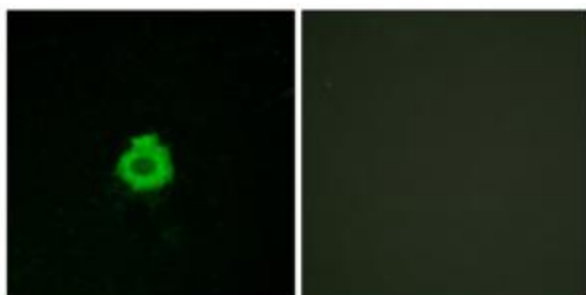
Product Type:	Primary Antibodies
Applications:	IF, IHC
Recommended Dilution:	IHC: 1:50~1:100, IF: 1:100~1:500, ELISA: 1:10000
Reactivity:	Human, Mouse
Host:	Rabbit
Isotype:	IgG
Clonality:	Polyclonal
Immunogen:	The antiserum was produced against synthesized peptide derived from internal of human BAI2.
Formulation:	Phosphate buffered saline (without Mg ²⁺ and Ca ²⁺), pH 7.4, 150mM NaCl, 0.02% sodium azide and 50% glycerol.
Concentration:	lot specific
Purification:	The antibody was affinity-purified from rabbit antiserum by affinity-chromatography using epitope-specific immunogen.
Conjugation:	Unconjugated
Storage:	Store at -20°C as received.
Stability:	Stable for 12 months from date of receipt.
Gene Name:	adhesion G protein-coupled receptor B2
Database Link:	NP_001694 Entrez Gene 230775 Mouse Entrez Gene 576 Human O60241
Synonyms:	brain-specific angiogenesis inhibitor 2; Brain-specific angiogenesis inhibitor-2
Note:	BAI2 antibody detects endogenous levels of total BAI2 protein.
Protein Families:	Druggable Genome, Transmembrane



[View online »](#)

Product images:

Immunohistochemistry analysis of paraffin-embedded human brain tissue using BAI2 antibody. The picture on the right is treated with the synthesized peptide.



Immunofluorescence analysis of HuvEc cells, using BAI2 antibody. The picture on the right is treated with the synthesized peptide.