

Product datasheet for **TA313495**

AVPR V2 (AVPR2) Rabbit Polyclonal Antibody

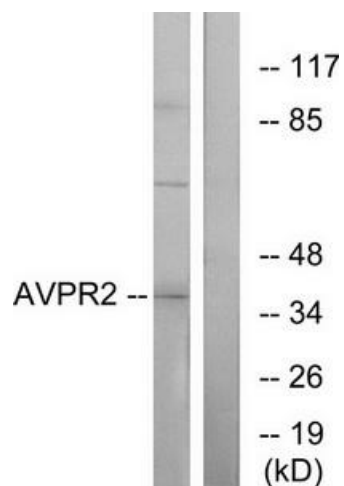
Product data:

Product Type:	Primary Antibodies
Applications:	IF, WB
Recommended Dilution:	WB: 1:500~1:3000, IF: 1:100~1:500, ELISA: 1:10000
Reactivity:	Human
Host:	Rabbit
Isotype:	IgG
Clonality:	Polyclonal
Immunogen:	The antiserum was produced against synthesized peptide derived from internal of human AVPR2.
Formulation:	Phosphate buffered saline (without Mg ²⁺ and Ca ²⁺), pH 7.4, 150mM NaCl, 0.02% sodium azide and 50% glycerol.
Concentration:	lot specific
Purification:	The antibody was affinity-purified from rabbit antiserum by affinity-chromatography using epitope-specific immunogen.
Conjugation:	Unconjugated
Storage:	Store at -20°C as received.
Stability:	Stable for 12 months from date of receipt.
Gene Name:	arginine vasopressin receptor 2
Database Link:	NP_000045 Entrez Gene 554 Human P30518
Synonyms:	ADHR; DI1; DIR; DIR3; NDI; V2R
Note:	AVPR2 antibody detects endogenous levels of total AVPR2 protein.
Protein Families:	Druggable Genome, GPCR, Transmembrane
Protein Pathways:	Neuroactive ligand-receptor interaction

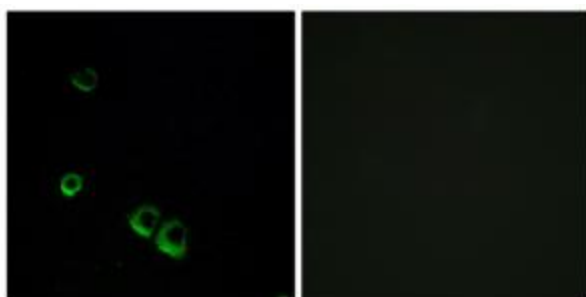


[View online »](#)

Product images:



Western blot analysis of extracts from RAW264.7 cells, using AVPR2 antibody. The lane on the right is treated with the synthesized peptide.



Immunofluorescence analysis of MCF-7 cells, using AVPR2 antibody. The picture on the right is treated with the synthesized peptide.