

Product datasheet for **TA313494**

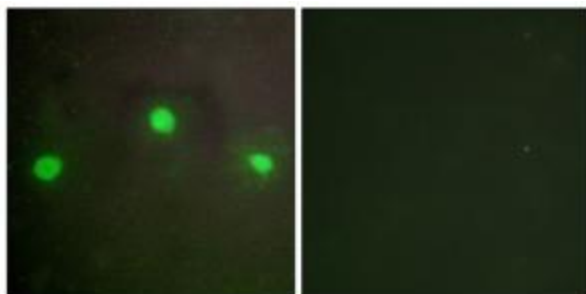
ATRX Rabbit Polyclonal Antibody

Product data:

Product Type:	Primary Antibodies
Applications:	IF
Recommended Dilution:	IF: 1:100~1:500, ELISA: 1:10000
Reactivity:	Human, Mouse
Host:	Rabbit
Isotype:	IgG
Clonality:	Polyclonal
Immunogen:	The antiserum was produced against synthesized peptide derived from N-terminal of human ATRX.
Formulation:	Phosphate buffered saline (without Mg ²⁺ and Ca ²⁺), pH 7.4, 150mM NaCl, 0.02% sodium azide and 50% glycerol.
Concentration:	lot specific
Purification:	The antibody was affinity-purified from rabbit antiserum by affinity-chromatography using epitope-specific immunogen.
Conjugation:	Unconjugated
Storage:	Store at -20°C as received.
Stability:	Stable for 12 months from date of receipt.
Gene Name:	ATRX, chromatin remodeler
Database Link:	NP_000480 Entrez Gene 22589 Mouse Entrez Gene 546 Human P46100
Synonyms:	ATR2; JMS; MRX52; MRXHF1; RAD54; RAD54L; SFM1; SHS; XH2; XNP; ZNF-HX
Note:	ATRXantibody detects endogenous levels of total ATRX protein.
Protein Families:	Druggable Genome, Transcription Factors



[View online »](#)

Product images:

Immunofluorescence analysis of A549 cells, using ATRX antibody. The picture on the right is treated with the synthesized peptide.