

## Product datasheet for **TA313493**

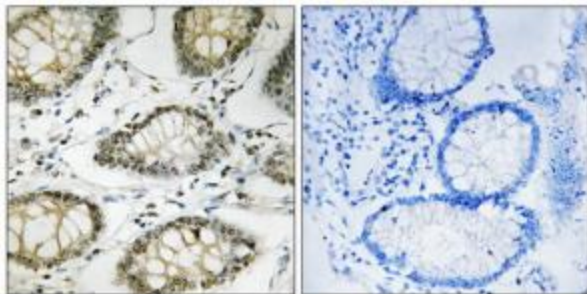
### ATR Rabbit Polyclonal Antibody

#### Product data:

Product Type:	Primary Antibodies
Applications:	IHC
Recommended Dilution:	IHC: 1:50~1:100, ELISA: 1:40000
Reactivity:	Human
Modifications:	Phospho-specific
Host:	Rabbit
Isotype:	IgG
Clonality:	Polyclonal
Immunogen:	The antiserum was produced against synthesized phosphopeptide derived from human ATR around the phosphorylation site of serine 428 (G-I-SP-P-K).
Formulation:	Phosphate buffered saline (without Mg <sup>2+</sup> and Ca <sup>2+</sup> ), pH 7.4, 150mM NaCl, 0.02% sodium azide and 50% glycerol.
Concentration:	lot specific
Purification:	The antibody was affinity-purified from rabbit antiserum by affinity-chromatography using epitope-specific immunogen.
Conjugation:	Unconjugated
Storage:	Store at -20°C as received.
Stability:	Stable for 12 months from date of receipt.
Gene Name:	ATR serine/threonine kinase
Database Link:	<a href="#">NP_001175</a> <a href="#">Entrez Gene 545 Human</a> <a href="#">Q13535</a>
Synonyms:	FCTCS; FRP1; MEC1; SCKL; SCKL1
Note:	ATR (Phospho-Ser428) antibody detects endogenous levels of ATR only when phosphorylated at serine 428.
Protein Families:	Druggable Genome, Protein Kinase
Protein Pathways:	Cell cycle, p53 signaling pathway



[View online »](#)

**Product images:**

Immunohistochemistry analysis of paraffin-embedded human colon carcinoma tissue using ATR (Phospho-Ser428) antibody. The picture on the right is treated with the synthesized peptide.