

## Product datasheet for **TA313490**

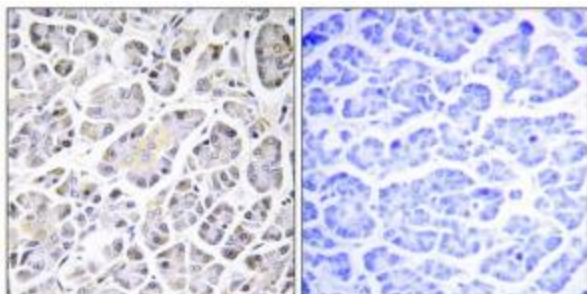
### ATP5MC3 Rabbit Polyclonal Antibody

#### Product data:

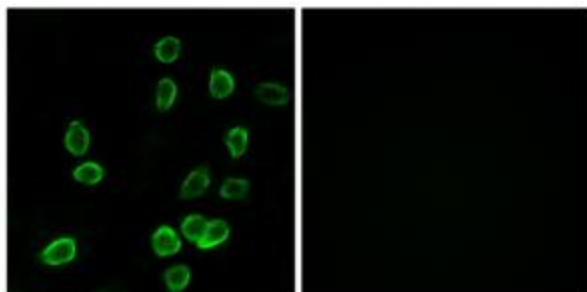
Product Type:	Primary Antibodies
Applications:	IF, IHC
Recommended Dilution:	IHC: 1:50~1:100, IF: 1:100~1:500, ELISA: 1:40000
Reactivity:	Human, Rat
Host:	Rabbit
Isotype:	IgG
Clonality:	Polyclonal
Immunogen:	The antiserum was produced against synthesized peptide derived from internal of human ATP5G3.
Formulation:	Phosphate buffered saline (without Mg <sup>2+</sup> and Ca <sup>2+</sup> ), pH 7.4, 150mM NaCl, 0.02% sodium azide and 50% glycerol.
Concentration:	lot specific
Purification:	The antibody was affinity-purified from rabbit antiserum by affinity-chromatography using epitope-specific immunogen.
Conjugation:	Unconjugated
Storage:	Store at -20°C as received.
Stability:	Stable for 12 months from date of receipt.
Gene Name:	ATP synthase, H <sup>+</sup> transporting, mitochondrial Fo complex subunit C3 (subunit 9)
Database Link:	<a href="#">NP_001680</a> <a href="#">Entrez Gene 114630 Rat</a> <a href="#">Entrez Gene 518 Human</a> <a href="#">P48201</a>
Synonyms:	P3
Note:	ATP5G3 antibody detects endogenous levels of total ATP5G3 protein.
Protein Families:	Transmembrane
Protein Pathways:	Alzheimer's disease, Huntington's disease, Metabolic pathways, Oxidative phosphorylation, Parkinson's disease



[View online »](#)

**Product images:**

Immunohistochemistry analysis of paraffin-embedded human pancreas tissue using ATP5G3 antibody. The picture on the right is treated with the synthesized peptide.



Immunofluorescence analysis of A549 cells, using ATP5G3 antibody. The picture on the right is treated with the synthesized peptide.