

Product datasheet for **TA313488**

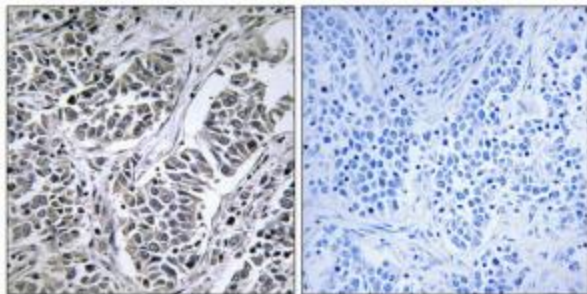
ATP5F1D Rabbit Polyclonal Antibody

Product data:

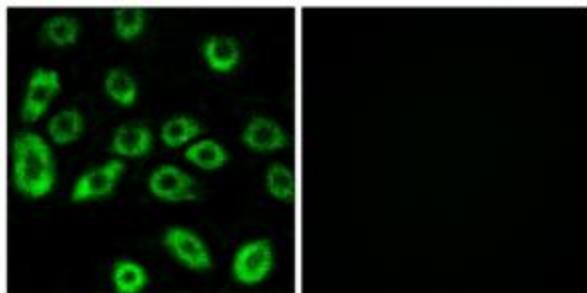
Product Type:	Primary Antibodies
Applications:	IF, IHC
Recommended Dilution:	IHC: 1:50~1:100, IF: 1:100~1:500, ELISA: 1:20000
Reactivity:	Human, Mouse, Rat
Host:	Rabbit
Isotype:	IgG
Clonality:	Polyclonal
Immunogen:	The antiserum was produced against synthesized peptide derived from internal of human ATP5D.
Formulation:	Phosphate buffered saline (without Mg ²⁺ and Ca ²⁺), pH 7.4, 150mM NaCl, 0.02% sodium azide and 50% glycerol.
Concentration:	lot specific
Purification:	The antibody was affinity-purified from rabbit antiserum by affinity-chromatography using epitope-specific immunogen.
Conjugation:	Unconjugated
Storage:	Store at -20°C as received.
Stability:	Stable for 12 months from date of receipt.
Gene Name:	ATP synthase, H ⁺ transporting, mitochondrial F1 complex, delta subunit
Database Link:	NP_001678 Entrez Gene 66043 Mouse Entrez Gene 245965 Rat Entrez Gene 513 Human P30049
Synonyms:	ATP synthase; delta subunit; H ⁺ transporting; mitochondrial ATP synthase; mitochondrial ATP synthase complex delta-subunit precursor; mitochondrial F1 complex
Note:	ATP5D antibody detects endogenous levels of total ATP5D protein.
Protein Pathways:	Alzheimer's disease, Huntington's disease, Metabolic pathways, Oxidative phosphorylation, Parkinson's disease



[View online »](#)

Product images:

Immunohistochemistry analysis of paraffin-embedded human lung carcinoma tissue using ATP5D antibody. The picture on the right is treated with the synthesized peptide.



Immunofluorescence analysis of A549 cells, using ATP5D antibody. The picture on the right is treated with the synthesized peptide.