

## Product datasheet for **TA313487**

### ATP5A (ATP5A1) Rabbit Polyclonal Antibody

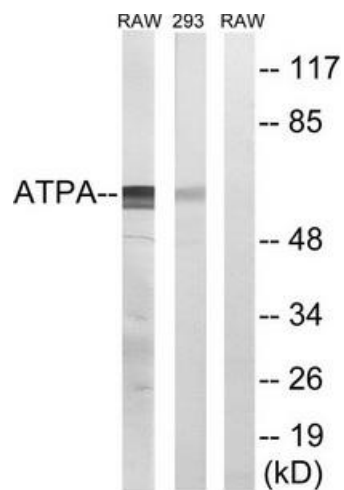
#### Product data:

Product Type:	Primary Antibodies
Applications:	WB
Recommended Dilution:	WB: 1:500~1:3000, ELISA: 1:40000
Reactivity:	Mouse, Rat, Human
Host:	Rabbit
Isotype:	IgG
Clonality:	Polyclonal
Immunogen:	The antiserum was produced against synthesized peptide derived from internal of human ATP5A1.
Formulation:	Phosphate buffered saline (without Mg <sup>2+</sup> and Ca <sup>2+</sup> ), pH 7.4, 150mM NaCl, 0.02% sodium azide and 50% glycerol.
Concentration:	lot specific
Purification:	The antibody was affinity-purified from rabbit antiserum by affinity-chromatography using epitope-specific immunogen.
Conjugation:	Unconjugated
Storage:	Store at -20°C as received.
Stability:	Stable for 12 months from date of receipt.
Gene Name:	ATP synthase, H <sup>+</sup> transporting, mitochondrial F1 complex, alpha subunit 1, cardiac muscle
Database Link:	<a href="#">NP_004037</a> <a href="#">Entrez Gene 11946 Mouse</a> <a href="#">Entrez Gene 65262 Rat</a> <a href="#">Entrez Gene 498 Human</a> <a href="#">P25705</a>
Synonyms:	ATP5A; ATP5AL2; ATPM; COXPD22; hATP1; HEL-S-123m; MC5DN4; MOM2; OMR; ORM
Note:	ATP5A1 antibody detects endogenous levels of total ATP5A1 protein.
Protein Families:	Druggable Genome
Protein Pathways:	Alzheimer's disease, Huntington's disease, Metabolic pathways, Oxidative phosphorylation, Parkinson's disease



[View online »](#)

## Product images:



Western blot analysis of extracts from RAW264.7 cells and 293 cells, using ATP5A1 antibody. The lane on the right is treated with the synthesized peptide.