

Product datasheet for **TA313486**

ATP2A1 Rabbit Polyclonal Antibody

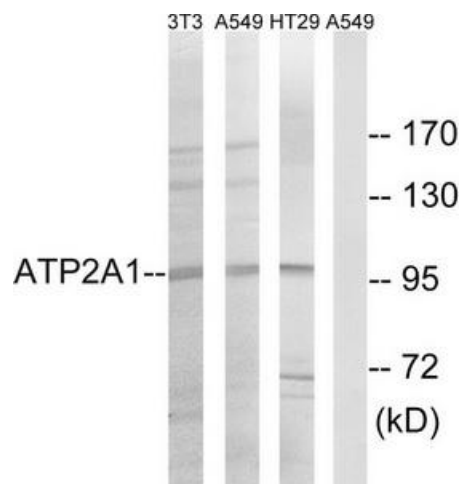
Product data:

Product Type:	Primary Antibodies
Applications:	WB
Recommended Dilution:	WB: 1:500~1:3000, ELISA: 1:10000
Reactivity:	Human, Mouse, Rat
Host:	Rabbit
Isotype:	IgG
Clonality:	Polyclonal
Immunogen:	The antiserum was produced against synthesized peptide derived from internal of human ATP2A1.
Formulation:	Phosphate buffered saline (without Mg ²⁺ and Ca ²⁺), pH 7.4, 150mM NaCl, 0.02% sodium azide and 50% glycerol.
Concentration:	lot specific
Purification:	The antibody was affinity-purified from rabbit antiserum by affinity-chromatography using epitope-specific immunogen.
Conjugation:	Unconjugated
Storage:	Store at -20°C as received.
Stability:	Stable for 12 months from date of receipt.
Gene Name:	ATPase sarcoplasmic/endoplasmic reticulum Ca ²⁺ transporting 1
Database Link:	NP_004311 Entrez Gene 11937 Mouse Entrez Gene 116601 Rat Entrez Gene 487 Human O14983
Synonyms:	ATP2A; SERCA1
Note:	ATP2A1 antibody detects endogenous levels of total ATP2A1 protein.
Protein Families:	Druggable Genome, Transmembrane
Protein Pathways:	Alzheimer's disease, Calcium signaling pathway



[View online »](#)

Product images:



Western blot analysis of extracts from NIH/3T3 cells, A549 cells and HT-29 cells, using ATP2A1 antibody. The lane on the right is treated with the synthesized peptide.