

## Product datasheet for **TA313483**

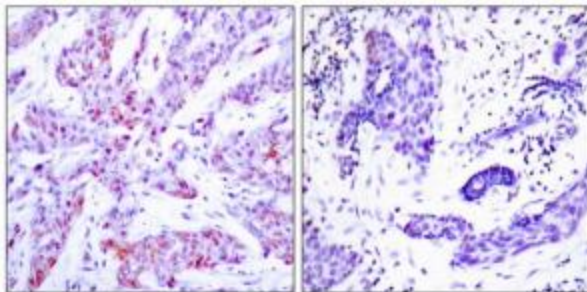
### ATF 4 (ATF4) Rabbit Polyclonal Antibody

#### Product data:

Product Type:	Primary Antibodies
Applications:	IHC
Recommended Dilution:	IHC: 1:50~1:100, ELISA: 1:20000
Reactivity:	Human
Host:	Rabbit
Isotype:	IgG
Clonality:	Polyclonal
Immunogen:	This antiserum was produced against synthesized non-phosphopeptide derived from human ATF4 around the phosphorylation site of Serine 245.
Formulation:	Phosphate buffered saline (without Mg <sup>2+</sup> and Ca <sup>2+</sup> ), pH 7.4, 150mM NaCl, 0.02% sodium azide and 50% glycerol.
Concentration:	lot specific
Purification:	The antibody was affinity-purified from rabbit antiserum by affinity-chromatography using epitope-specific immunogen.
Conjugation:	Unconjugated
Storage:	Store at -20°C as received.
Stability:	Stable for 12 months from date of receipt.
Gene Name:	activating transcription factor 4
Database Link:	<a href="#">NP_001666</a> <a href="#">Entrez Gene 468 Human</a> <a href="#">P18848</a>
Synonyms:	CREB-2; CREB2; TAXREB67; TXREB
Note:	ATF4 (Ab-245) Antibody detects endogenous levels of ATF4 protein around Serine 245.
Protein Families:	Transcription Factors
Protein Pathways:	GnRH signaling pathway, Long-term potentiation, MAPK signaling pathway, Neurotrophin signaling pathway, Prostate cancer



[View online »](#)

**Product images:**

Immunohistochemistry analysis of paraffin-embedded human breast carcinoma, using ATF4 (Ab-245) Antibody. The picture on the right is treated with the synthesized peptide.