

Product datasheet for **TA313480**

ASCL2 Rabbit Polyclonal Antibody

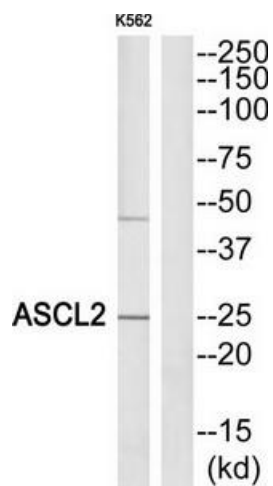
Product data:

Product Type:	Primary Antibodies
Applications:	WB
Recommended Dilution:	WB: 1:500~1:3000, ELISA: 1:40000
Reactivity:	Human, Mouse, Rat
Host:	Rabbit
Isotype:	IgG
Clonality:	Polyclonal
Immunogen:	The antiserum was produced against synthesized peptide derived from Internal of human ASCL2.
Formulation:	Phosphate buffered saline (without Mg ²⁺ and Ca ²⁺), pH 7.4, 150mM NaCl, 0.02% sodium azide and 50% glycerol.
Concentration:	lot specific
Purification:	The antibody was affinity-purified from rabbit antiserum by affinity-chromatography using epitope-specific immunogen.
Conjugation:	Unconjugated
Storage:	Store at -20°C as received.
Stability:	Stable for 12 months from date of receipt.
Gene Name:	achaete-scute family bHLH transcription factor 2
Database Link:	NP_005161 Entrez Gene 17173 Mouse Entrez Gene 24209 Rat Entrez Gene 430 Human Q99929
Synonyms:	ASH2; bHLHa45; HASH2; MASH2
Note:	ASCL2 antibody detects endogenous levels of total ASCL2 protein.
Protein Families:	Druggable Genome, Transcription Factors



[View online »](#)

Product images:



Western blot analysis of extracts from K562 cells, using ASCL2 antibody. The lane on the right is treated with the synthesized peptide.