

Product datasheet for **TA313476**

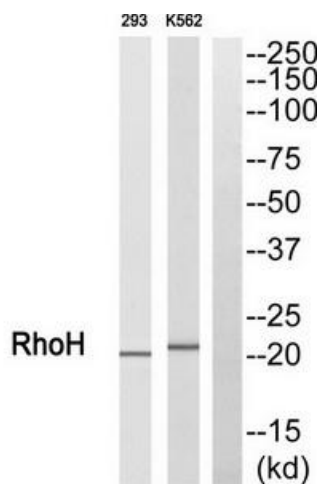
RHOH Rabbit Polyclonal Antibody

Product data:

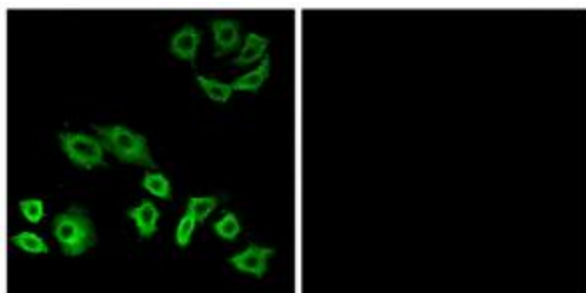
Product Type:	Primary Antibodies
Applications:	IF, WB
Recommended Dilution:	WB: 1:500~1:3000, IF: 1:100~1:500, ELISA: 1:5000
Reactivity:	Human, Mouse, Rat
Host:	Rabbit
Isotype:	IgG
Clonality:	Polyclonal
Immunogen:	The antiserum was produced against synthesized peptide derived from internal of human RhoH.
Formulation:	Phosphate buffered saline (without Mg ²⁺ and Ca ²⁺), pH 7.4, 150mM NaCl, 0.02% sodium azide and 50% glycerol.
Purification:	The antibody was affinity-purified from rabbit antiserum by affinity-chromatography using epitope-specific immunogen.
Conjugation:	Unconjugated
Storage:	Store at -20°C as received.
Stability:	Stable for 12 months from date of receipt.
Gene Name:	ras homolog family member H
Database Link:	NP_004301 Entrez Gene 74734 Mouse Entrez Gene 305341 Rat Entrez Gene 399 Human Q15669
Synonyms:	ARHH; TTF
Note:	RhoH antibody detects endogenous levels of total RhoH protein.
Protein Families:	Transcription Factors
Protein Pathways:	Leukocyte transendothelial migration



[View online »](#)

Product images:


Western blot analysis of extracts from HT-29 cells, using RhoH antibody. The lane on the right is treated with the synthesized peptide.



Immunofluorescence analysis of A549 cells, using RhoH antibody. The picture on the right is treated with the synthesized peptide.