

Product datasheet for **TA313472**

RHOB Rabbit Polyclonal Antibody

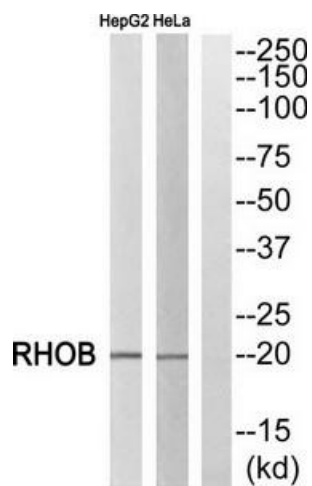
Product data:

Product Type:	Primary Antibodies
Applications:	WB
Recommended Dilution:	WB: 1:500~1:3000, ELISA: 1:1000
Reactivity:	Human, Mouse, Rat
Host:	Rabbit
Isotype:	IgG
Clonality:	Polyclonal
Immunogen:	The antiserum was produced against synthesized peptide derived from internal of human RHOB.
Formulation:	Phosphate buffered saline (without Mg ²⁺ and Ca ²⁺), pH 7.4, 150mM NaCl, 0.02% sodium azide and 50% glycerol.
Concentration:	lot specific
Purification:	The antibody was affinity-purified from rabbit antiserum by affinity-chromatography using epitope-specific immunogen.
Conjugation:	Unconjugated
Storage:	Store at -20°C as received.
Stability:	Stable for 12 months from date of receipt.
Gene Name:	ras homolog family member B
Database Link:	NP_004031 Entrez Gene 11852 MouseEntrez Gene 64373 RatEntrez Gene 388 Human P62745
Synonyms:	ARH6; ARHB; MST081; MSTP081; RHOH6
Note:	RHOB antibody detects endogenous levels of total RHOB protein.
Protein Families:	Druggable Genome



[View online »](#)

Product images:



Western blot analysis of extracts from HepG2 cells and HeLa cells, using RHOB antibody. The lane on the right is treated with the synthesized peptide.