

Product datasheet for **TA313471**

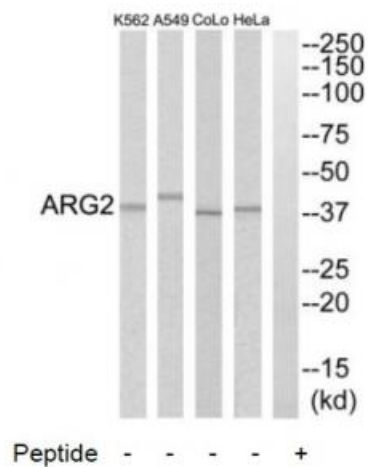
ARG2 Rabbit Polyclonal Antibody

Product data:

Product Type:	Primary Antibodies
Applications:	WB
Recommended Dilution:	WB: 1:500~1:3000, ELISA: 1:5000
Reactivity:	Human
Host:	Rabbit
Isotype:	IgG
Clonality:	Polyclonal
Immunogen:	The antiserum was produced against synthesized peptide derived from C-terminal of human ARG2.
Formulation:	Phosphate buffered saline (without Mg ²⁺ and Ca ²⁺), pH 7.4, 150mM NaCl, 0.02% sodium azide and 50% glycerol.
Concentration:	lot specific
Purification:	The antibody was affinity-purified from rabbit antiserum by affinity-chromatography using epitope-specific immunogen.
Conjugation:	Unconjugated
Storage:	Store at -20°C as received.
Stability:	Stable for 12 months from date of receipt.
Gene Name:	arginase 2
Database Link:	NP_001163 Entrez Gene 384 Human P78540
Synonyms:	arginase; arginase 2; kidney arginase; L-arginine amidinohydrolase; L-arginine ureahydrolase; nonhepatic arginase; type II
Note:	ARG2 antibody detects endogenous levels of total ARG2 protein.
Protein Pathways:	Arginine and proline metabolism, Metabolic pathways



[View online »](#)

Product images:


Western blot analysis of extracts from HeLa cells, A549 cells, COLO205 cells and K562 cells, using ARG2 antibody. The lane on the right is treated with the synthesized peptide.