

## Product datasheet for **TA313468**

### A RAF (ARAF) Rabbit Polyclonal Antibody

#### Product data:

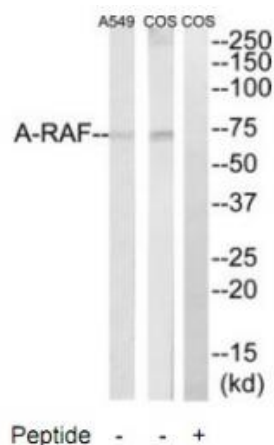
Product Type:	Primary Antibodies
Applications:	WB
Recommended Dilution:	WB: 1:500~1:3000, IHC: 1:50~1:100, ELISA: 1:20000
Reactivity:	Mouse, Human, Rat
Host:	Rabbit
Isotype:	IgG
Clonality:	Polyclonal
Immunogen:	The antiserum was produced against synthesized peptide derived from internal of human A-RAF.
Formulation:	Phosphate buffered saline (without Mg <sup>2+</sup> and Ca <sup>2+</sup> ), pH 7.4, 150mM NaCl, 0.02% sodium azide and 50% glycerol.
Concentration:	lot specific
Purification:	The antibody was affinity-purified from rabbit antiserum by affinity-chromatography using epitope-specific immunogen.
Conjugation:	Unconjugated
Storage:	Store at -20°C as received.
Stability:	Stable for 12 months from date of receipt.
Gene Name:	A-Raf proto-oncogene, serine/threonine kinase
Database Link:	<a href="#">NP_001243125</a> <a href="#">Entrez Gene 11836 Mouse</a> <a href="#">Entrez Gene 64363 Rat</a> <a href="#">Entrez Gene 369 Human</a> <a href="#">P10398</a>
Synonyms:	A-RAF; ARAF1; PKS2; RAFA1
Note:	A-RAF antibody detects endogenous levels of total A-RAF protein.
Protein Families:	Druggable Genome, Protein Kinase



[View online »](#)

**Protein Pathways:**

Acute myeloid leukemia, Bladder cancer, Chronic myeloid leukemia, Colorectal cancer, Endometrial cancer, ErbB signaling pathway, Glioma, Insulin signaling pathway, Long-term depression, Long-term potentiation, Melanoma, Natural killer cell mediated cytotoxicity, Non-small cell lung cancer, Pancreatic cancer, Pathways in cancer, Progesterone-mediated oocyte maturation, Prostate cancer, Regulation of actin cytoskeleton, Renal cell carcinoma, Vascular smooth muscle contraction

**Product images:**


Western blot analysis of extracts from Cos7 and A549 cells, using A-RAF antibody. The lane on the right is treated with the synthesized peptide.