

## Product datasheet for **TA313463**

### APLP2 Rabbit Polyclonal Antibody

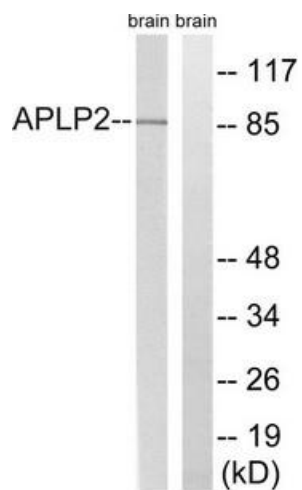
#### Product data:

Product Type:	Primary Antibodies
Applications:	WB
Recommended Dilution:	WB: 1:500~1:3000, ELISA: 1:40000
Reactivity:	Human, Mouse, Rat
Host:	Rabbit
Isotype:	IgG
Clonality:	Polyclonal
Immunogen:	The antiserum was produced against synthesized non-phosphopeptide derived from human APLP2 around the phosphorylation site of tyrosine 755 (P-T-YP-K-Y).
Formulation:	Phosphate buffered saline (without Mg <sup>2+</sup> and Ca <sup>2+</sup> ), pH 7.4, 150mM NaCl, 0.02% sodium azide and 50% glycerol.
Concentration:	lot specific
Purification:	The antibody was affinity-purified from rabbit antiserum by affinity-chromatography using epitope-specific immunogen.
Conjugation:	Unconjugated
Storage:	Store at -20°C as received.
Stability:	Stable for 12 months from date of receipt.
Gene Name:	amyloid beta precursor like protein 2
Database Link:	<a href="#">NP_001135748</a> <a href="#">Entrez Gene 11804 MouseEntrez Gene 64312 RatEntrez Gene 334 Human Q06481</a>
Synonyms:	APLP-2; APPH; APPL2; CDEBP
Note:	APLP2 (Ab-755) antibody detects endogenous levels of total APLP2 protein.
Protein Families:	Druggable Genome, Transmembrane



[View online »](#)

## Product images:



Western blot analysis of extracts from rat brain cells, using APLP2 (Ab-755) antibody. The lane on the right is treated with the synthesized peptide.