

Product datasheet for **TA313462**

APLP2 Rabbit Polyclonal Antibody

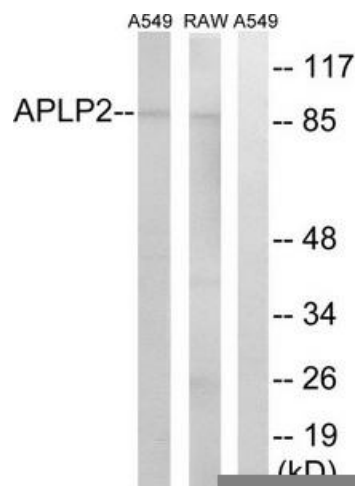
Product data:

Product Type:	Primary Antibodies
Applications:	WB
Recommended Dilution:	WB: 1:500~1:3000, ELISA: 1:40000
Reactivity:	Mouse, Rat, Human
Host:	Rabbit
Isotype:	IgG
Clonality:	Polyclonal
Immunogen:	The antiserum was produced against synthesized peptide derived from internal of human APLP2.
Formulation:	Phosphate buffered saline (without Mg ²⁺ and Ca ²⁺), pH 7.4, 150mM NaCl, 0.02% sodium azide and 50% glycerol.
Concentration:	lot specific
Purification:	The antibody was affinity-purified from rabbit antiserum by affinity-chromatography using epitope-specific immunogen.
Conjugation:	Unconjugated
Storage:	Store at -20°C as received.
Stability:	Stable for 12 months from date of receipt.
Gene Name:	amyloid beta precursor like protein 2
Database Link:	NP_001135748 Entrez Gene 11804 MouseEntrez Gene 64312 RatEntrez Gene 334 Human Q06481
Synonyms:	APLP-2; APPH; APPL2; CDEBP
Note:	APLP2 antibody detects endogenous levels of total APLP2 protein.
Protein Families:	Druggable Genome, Transmembrane



[View online »](#)

Product images:



Western blot analysis of extracts from A549 cells and RAW264.7 cells, using APLP2 antibody. The lane on the right is treated with the synthesized peptide.