

## Product datasheet for **TA313461**

### AIRE Rabbit Polyclonal Antibody

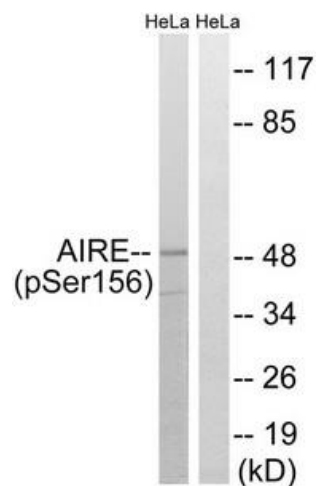
#### Product data:

Product Type:	Primary Antibodies
Applications:	WB
Recommended Dilution:	WB: 1:500~1:3000, ELISA: 1:1000
Reactivity:	Human
Modifications:	Phospho-specific
Host:	Rabbit
Isotype:	IgG
Clonality:	Polyclonal
Immunogen:	The antiserum was produced against synthesized phosphopeptide derived from human AIRE around the phosphorylation site of serine 156 (P-G-SP-Q-L).
Formulation:	Phosphate buffered saline (without Mg <sup>2+</sup> and Ca <sup>2+</sup> ), pH 7.4, 150mM NaCl, 0.02% sodium azide and 50% glycerol.
Concentration:	lot specific
Purification:	The antibody was affinity-purified from rabbit antiserum by affinity-chromatography using epitope-specific immunogen.
Conjugation:	Unconjugated
Storage:	Store at -20°C as received.
Stability:	Stable for 12 months from date of receipt.
Gene Name:	autoimmune regulator
Database Link:	<a href="#">NP_000374</a> <a href="#">Entrez Gene 326 Human</a> <a href="#">O43918</a>
Synonyms:	AIRE1; APECED; APS1; APSI; PGA1
Note:	AIRE (Phospho-Ser156) antibody detects endogenous levels of AIRE only when phosphorylated at serine 156.
Protein Families:	Druggable Genome
Protein Pathways:	Primary immunodeficiency, Ubiquitin mediated proteolysis



[View online »](#)

## Product images:



Western blot analysis of extracts from HeLa cells, treated with Hu (2nM, 24hours), using AIRE (Phospho-Ser156) antibody. The lane on the right is treated with the synthesized peptide.