

Product datasheet for **TA313460**

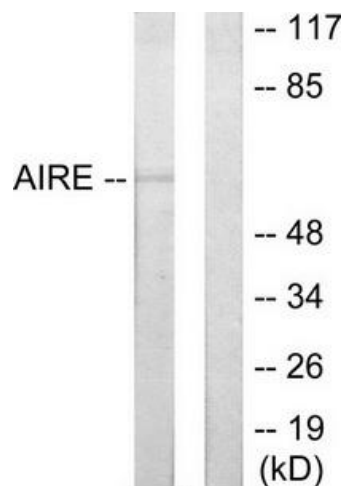
AIRE Rabbit Polyclonal Antibody

Product data:

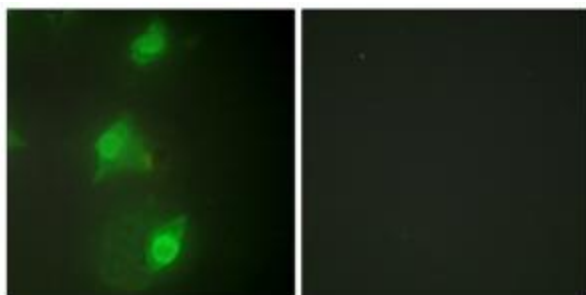
Product Type:	Primary Antibodies
Applications:	IF, WB
Recommended Dilution:	WB: 1:500~1:3000, IF: 1:100~1:500, ELISA: 1:5000
Reactivity:	Human, Mouse
Host:	Rabbit
Isotype:	IgG
Clonality:	Polyclonal
Immunogen:	The antiserum was produced against synthesized peptide derived from internal of human AIRE.
Formulation:	Phosphate buffered saline (without Mg ²⁺ and Ca ²⁺), pH 7.4, 150mM NaCl, 0.02% sodium azide and 50% glycerol.
Concentration:	lot specific
Purification:	The antibody was affinity-purified from rabbit antiserum by affinity-chromatography using epitope-specific immunogen.
Conjugation:	Unconjugated
Storage:	Store at -20°C as received.
Stability:	Stable for 12 months from date of receipt.
Gene Name:	autoimmune regulator
Database Link:	NP_000374 Entrez Gene 11634 Mouse Entrez Gene 326 Human O43918
Synonyms:	AIRE1; APECED; APS1; APSI; PGA1
Note:	AIRE antibody detects endogenous levels of total AIRE protein.
Protein Families:	Druggable Genome
Protein Pathways:	Primary immunodeficiency, Ubiquitin mediated proteolysis



[View online »](#)

Product images:

Western blot analysis of extracts from 293 cells, using AIRE antibody. The lane on the right is treated with the synthesized peptide.



Immunofluorescence analysis of HeLa cells, using AIRE antibody. The picture on the right is treated with the synthesized peptide.