

Product datasheet for **TA313458**

APC Rabbit Polyclonal Antibody

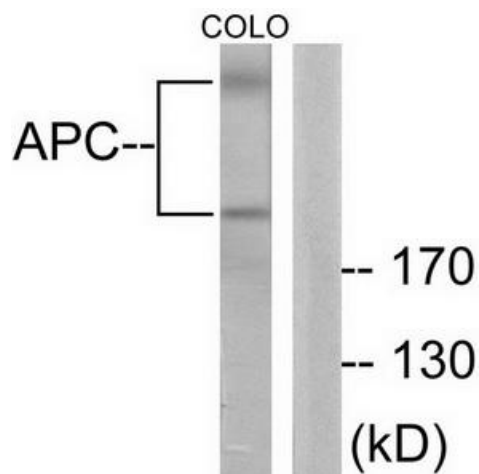
Product data:

| | |
|-----------------------|--|
| Product Type: | Primary Antibodies |
| Applications: | IHC, WB |
| Recommended Dilution: | WB: 1:500~1:3000, IHC: 1:50~1:100, ELISA: 1:40000 |
| Reactivity: | Human, Mouse, Rat |
| Host: | Rabbit |
| Isotype: | IgG |
| Clonality: | Polyclonal |
| Immunogen: | The antiserum was produced against synthesized peptide derived from human APC. |
| Formulation: | Phosphate buffered saline (without Mg ²⁺ and Ca ²⁺), pH 7.4, 150mM NaCl, 0.02% sodium azide and 50% glycerol. |
| Concentration: | lot specific |
| Purification: | The antibody was affinity-purified from rabbit antiserum by affinity-chromatography using epitope-specific immunogen. |
| Conjugation: | Unconjugated |
| Storage: | Store at -20°C as received. |
| Stability: | Stable for 12 months from date of receipt. |
| Gene Name: | adenomatous polyposis coli |
| Database Link: | NP_000029 Entrez Gene 11789 Mouse Entrez Gene 24205 Rat Entrez Gene 324 Human P25054 |
| Synonyms: | BTPS2; DP2; DP2.5; DP3; GS; PPP1R46 |
| Note: | APC antibody detects endogenous levels of total APC protein. |
| Protein Families: | Druggable Genome |
| Protein Pathways: | Basal cell carcinoma, Colorectal cancer, Endometrial cancer, Pathways in cancer, Regulation of actin cytoskeleton, Wnt signaling pathway |

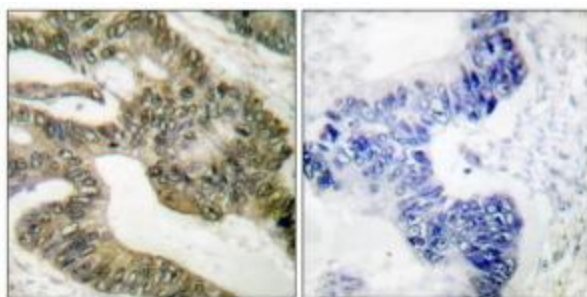


[View online »](#)

Product images:



Western blot analysis of extracts from J COLO205 cells, using APC antibody. The lane on the right is treated with the synthesized peptide.



Immunohistochemical analysis of paraffin-embedded human colon carcinoma tissue using APC antibody. The picture on the right is treated with the synthesized peptide.