

Product datasheet for **TA313456**

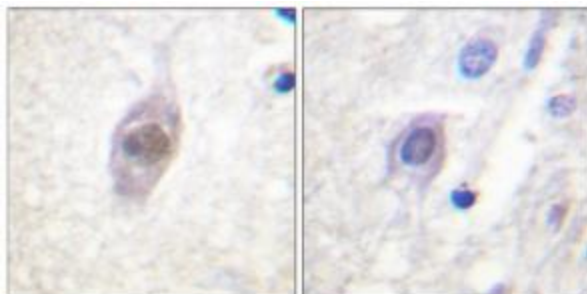
APC Rabbit Polyclonal Antibody

Product data:

Product Type:	Primary Antibodies
Applications:	IHC
Recommended Dilution:	IHC: 1:50~1:100, ELISA: 1:1000
Reactivity:	Human
Host:	Rabbit
Isotype:	IgG
Clonality:	Polyclonal
Immunogen:	The antiserum was produced against synthesized peptide derived from Internal of human APC
Formulation:	Phosphate buffered saline (without Mg ²⁺ and Ca ²⁺), pH 7.4, 150mM NaCl, 0.02% sodium azide and 50% glycerol.
Concentration:	lot specific
Purification:	The antibody was affinity-purified from rabbit antiserum by affinity-chromatography using epitope-specific immunogen.
Conjugation:	Unconjugated
Storage:	Store at -20°C as received.
Stability:	Stable for 12 months from date of receipt.
Gene Name:	adenomatous polyposis coli
Database Link:	NP_000029 Entrez Gene 324 Human P25054
Synonyms:	BTPS2; DP2; DP2.5; DP3; GS; PPP1R46
Note:	APC antibody detects endogenous levels of total APC protein
Protein Families:	Druggable Genome
Protein Pathways:	Basal cell carcinoma, Colorectal cancer, Endometrial cancer, Pathways in cancer, Regulation of actin cytoskeleton, Wnt signaling pathway



[View online »](#)

Product images:

Immunohistochemistry analysis of paraffin-embedded human brain tissue using APC antibody. The picture on the right is treated with the synthesized peptide.