

Product datasheet for **TA313454**

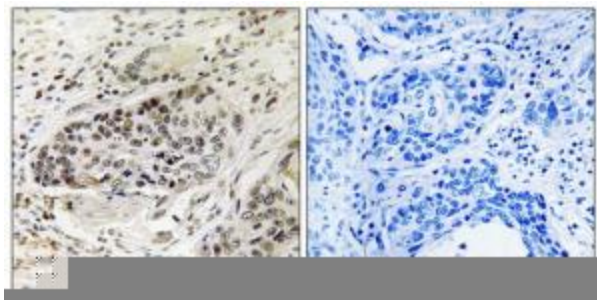
APBA2 Rabbit Polyclonal Antibody

Product data:

Product Type:	Primary Antibodies
Applications:	IHC
Recommended Dilution:	IHC: 1:50~1:100, ELISA: 1:5000
Reactivity:	Human, Mouse, Rat
Host:	Rabbit
Isotype:	IgG
Clonality:	Polyclonal
Immunogen:	The antiserum was produced against synthesized peptide derived from internal of human APBA2.
Formulation:	Phosphate buffered saline (without Mg ²⁺ and Ca ²⁺), pH 7.4, 150mM NaCl, 0.02% sodium azide and 50% glycerol.
Concentration:	lot specific
Purification:	The antibody was affinity-purified from rabbit antiserum by affinity-chromatography using epitope-specific immunogen.
Conjugation:	Unconjugated
Storage:	Store at -20°C as received.
Stability:	Stable for 12 months from date of receipt.
Gene Name:	amyloid beta precursor protein binding family A member 2
Database Link:	NP_005494 Entrez Gene 11784 Mouse Entrez Gene 83610 Rat Entrez Gene 321 Human Q99767
Synonyms:	D15S1518E; HsT16821; LIN-10; MGC:14091; MINT2; X11-BETA; X11L
Note:	APBA2 antibody detects endogenous levels of total APBA2 protein.



[View online »](#)

Product images:

Immunohistochemistry analysis of paraffin-embedded human lung carcinoma tissue using APBA2 antibody. The picture on the right is treated with the synthesized peptide.