

## Product datasheet for **TA313453**

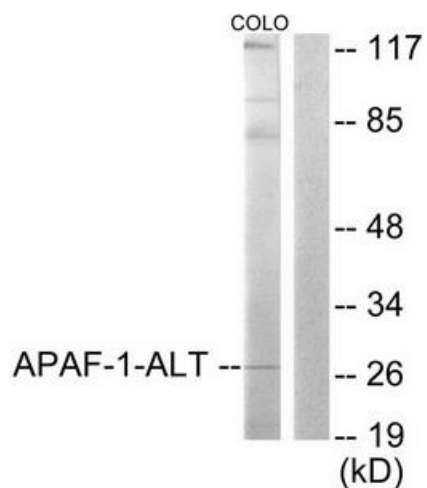
### APAF1 Rabbit Polyclonal Antibody

#### Product data:

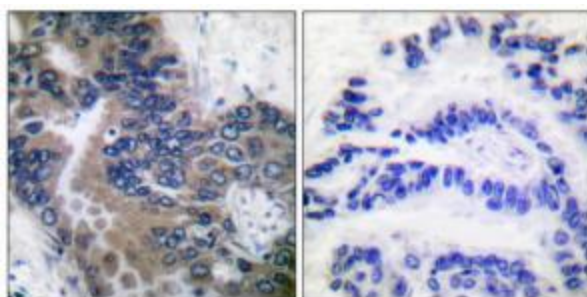
Product Type:	Primary Antibodies
Applications:	IHC, WB
Recommended Dilution:	WB: 1:500~1:3000, IHC: 1:50~1:100, ELISA: 1:10000
Reactivity:	Human
Host:	Rabbit
Isotype:	IgG
Clonality:	Polyclonal
Immunogen:	The antiserum was produced against synthesized peptide derived from human APAF-1-ALT.
Formulation:	Phosphate buffered saline (without Mg <sup>2+</sup> and Ca <sup>2+</sup> ), pH 7.4, 150mM NaCl, 0.02% sodium azide and 50% glycerol.
Concentration:	lot specific
Purification:	The antibody was affinity-purified from rabbit antiserum by affinity-chromatography using epitope-specific immunogen.
Conjugation:	Unconjugated
Storage:	Store at -20°C as received.
Stability:	Stable for 12 months from date of receipt.
Gene Name:	apoptotic peptidase activating factor 1
Database Link:	<a href="#">NP_001151</a> <a href="#">Entrez Gene 317 Human</a> <a href="#">O14727</a>
Synonyms:	APAF-1; CED4
Note:	APAF-1-ALT antibody detects endogenous levels of total APAF-1-ALT protein.
Protein Families:	Druggable Genome
Protein Pathways:	Alzheimer's disease, Amyotrophic lateral sclerosis (ALS), Apoptosis, Huntington's disease, p53 signaling pathway, Parkinson's disease, Small cell lung cancer



[View online »](#)

**Product images:**

Western blot analysis of extracts from COLO205, using APAF-1-ALT antibody (#TA313453). The lane on the right is treated with the synthesized peptide.



Immunohistochemical analysis of paraffin-embedded human lung carcinoma tissue using APAF-1-ALT antibody (#TA313453). The picture on the right is treated with the synthesized peptide.