

Product datasheet for **TA313452**

Aldehyde Oxidase (AOX1) Rabbit Polyclonal Antibody

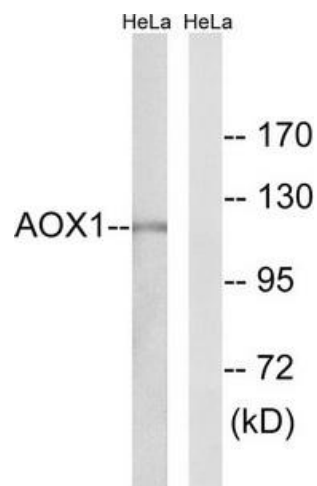
Product data:

Product Type:	Primary Antibodies
Applications:	IHC, WB
Recommended Dilution:	WB: 1:500~1:3000, IHC: 1:50~1:100, ELISA: 1:40000
Reactivity:	Human, Rat
Host:	Rabbit
Isotype:	IgG
Clonality:	Polyclonal
Immunogen:	The antiserum was produced against synthesized peptide derived from internal of human AOX1.
Formulation:	Phosphate buffered saline (without Mg ²⁺ and Ca ²⁺), pH 7.4, 150mM NaCl, 0.02% sodium azide and 50% glycerol.
Concentration:	lot specific
Purification:	The antibody was affinity-purified from rabbit antiserum by affinity-chromatography using epitope-specific immunogen.
Conjugation:	Unconjugated
Storage:	Store at -20°C as received.
Stability:	Stable for 12 months from date of receipt.
Gene Name:	aldehyde oxidase 1
Database Link:	NP_001150 Entrez Gene 54349 Rat Entrez Gene 316 Human Q06278
Synonyms:	AO; AOH1
Note:	AOX1 antibody detects endogenous levels of total AOX1 protein.
Protein Families:	Druggable Genome
Protein Pathways:	Drug metabolism - cytochrome P450, Metabolic pathways, Nicotinate and nicotinamide metabolism, Tryptophan metabolism, Tyrosine metabolism, Valine, leucine and isoleucine degradation, Vitamin B6 metabolism

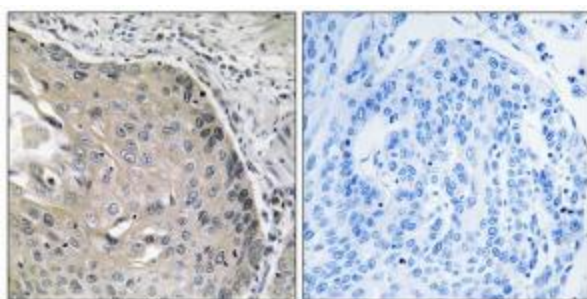


[View online »](#)

Product images:



Western blot analysis of extracts from HeLa cells, using AOX1 antibody. The lane on the right is treated with the synthesized peptide.



Immunohistochemistry analysis of paraffin-embedded human lung carcinoma tissue, using AOX1 antibody. The picture on the right is treated with the synthesized peptide.