

Product datasheet for **TA313451**

SLC25A6 Rabbit Polyclonal Antibody

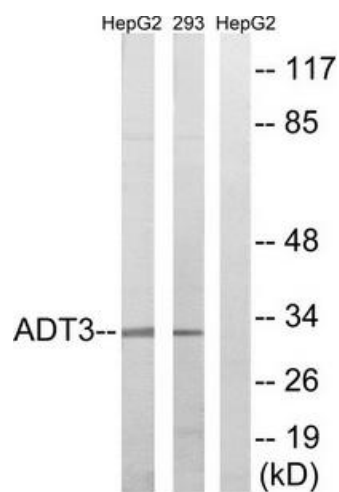
Product data:

Product Type:	Primary Antibodies
Applications:	WB
Recommended Dilution:	WB: 1:500~1:3000, ELISA: 1:40000
Reactivity:	Human
Host:	Rabbit
Isotype:	IgG
Clonality:	Polyclonal
Immunogen:	The antiserum was produced against synthesized peptide derived from internal of human SLC25A6.
Formulation:	Phosphate buffered saline (without Mg ²⁺ and Ca ²⁺), pH 7.4, 150mM NaCl, 0.02% sodium azide and 50% glycerol.
Concentration:	lot specific
Purification:	The antibody was affinity-purified from rabbit antiserum by affinity-chromatography using epitope-specific immunogen.
Conjugation:	Unconjugated
Storage:	Store at -20°C as received.
Stability:	Stable for 12 months from date of receipt.
Gene Name:	solute carrier family 25 member 6
Database Link:	NP_001627 Entrez Gene 293 Human P12236
Synonyms:	2; 3; AAC3; ANT; ANT 2; ANT 3; ANT3; ANT3Y
Note:	SLC25A6 antibody detects endogenous levels of total SLC25A6 protein.
Protein Families:	Druggable Genome, Transmembrane
Protein Pathways:	Calcium signaling pathway, Huntington's disease, Parkinson's disease



[View online »](#)

Product images:



Western blot analysis of extracts from HepG2 cells and 293 cells, using SLC25A6 antibody. The lane on the right is treated with the synthesized peptide.