

Product datasheet for **TA313448**

ALX3 Rabbit Polyclonal Antibody

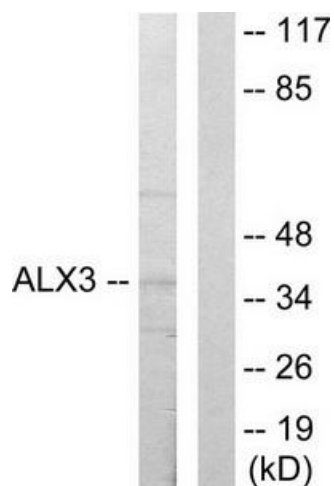
Product data:

Product Type:	Primary Antibodies
Applications:	IF, WB
Recommended Dilution:	WB: 1:500~1:3000, IF: 1:100~1:500, ELISA: 1:5000
Reactivity:	Human, Mouse, Rat
Host:	Rabbit
Isotype:	IgG
Clonality:	Polyclonal
Immunogen:	The antiserum was produced against synthesized peptide derived from internal of human ALX3.
Formulation:	Phosphate buffered saline (without Mg ²⁺ and Ca ²⁺), pH 7.4, 150mM NaCl, 0.02% sodium azide and 50% glycerol.
Concentration:	lot specific
Purification:	The antibody was affinity-purified from rabbit antiserum by affinity-chromatography using epitope-specific immunogen.
Conjugation:	Unconjugated
Storage:	Store at -20°C as received.
Stability:	Stable for 12 months from date of receipt.
Gene Name:	ALX homeobox 3
Database Link:	NP_006483 Entrez Gene 11694 MouseEntrez Gene 365900 RatEntrez Gene 257 Human O95076
Synonyms:	FND; FND1
Note:	ALX3 antibody detects endogenous levels of total ALX3 protein.

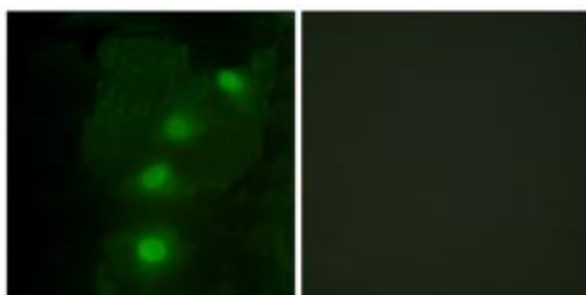


[View online »](#)

Product images:



Western blot analysis of extracts from 293 cells, using ALX3 antibody. The lane on the right is treated with the synthesized peptide.



Immunofluorescence analysis of HeLa cells, using ALX3 antibody. The picture on the right is treated with the synthesized peptide.