

Product datasheet for **TA313447**

AKR1B1 Rabbit Polyclonal Antibody

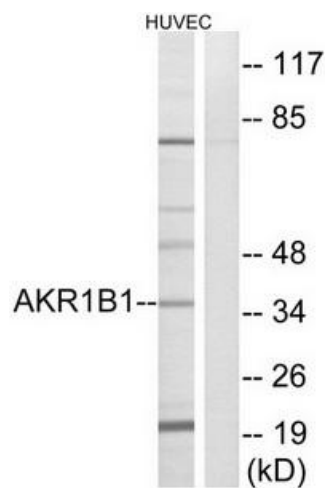
Product data:

Product Type:	Primary Antibodies
Applications:	WB
Recommended Dilution:	WB: 1:500~1:3000, ELISA: 1:20000
Reactivity:	Human, Rat
Host:	Rabbit
Isotype:	IgG
Clonality:	Polyclonal
Immunogen:	The antiserum was produced against synthesized peptide derived from internal of human AKR1B1.
Formulation:	Phosphate buffered saline (without Mg ²⁺ and Ca ²⁺), pH 7.4, 150mM NaCl, 0.02% sodium azide and 50% glycerol.
Concentration:	lot specific
Purification:	The antibody was affinity-purified from rabbit antiserum by affinity-chromatography using epitope-specific immunogen.
Conjugation:	Unconjugated
Storage:	Store at -20°C as received.
Stability:	Stable for 12 months from date of receipt.
Gene Name:	aldo-keto reductase family 1, member B1 (aldose reductase)
Database Link:	NP_001619 Entrez Gene 24192 Rat Entrez Gene 231 Human P15121
Synonyms:	ADR; ALDR1; ALR2; AR
Note:	AKR1B1 antibody detects endogenous levels of total AKR1B1 protein.
Protein Families:	Druggable Genome
Protein Pathways:	Fructose and mannose metabolism, Galactose metabolism, Glycerolipid metabolism, Metabolic pathways, Pentose and glucuronate interconversions, Pyruvate metabolism



[View online »](#)

Product images:



Western blot analysis of extracts from HUVEC cells, using AKR1B1 antibody. The lane on the right is treated with the synthesized peptide.