

Product datasheet for **TA313445**

Aldolase (ALDOA) Rabbit Polyclonal Antibody

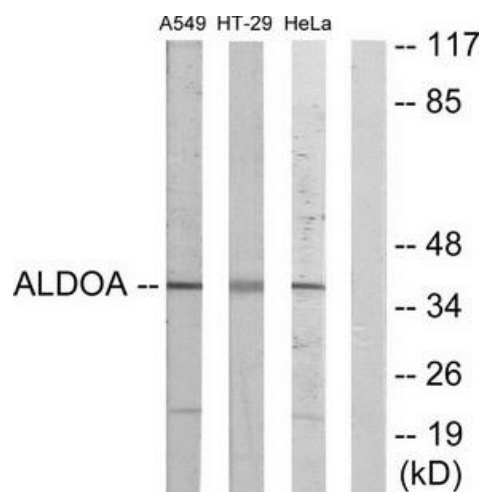
Product data:

Product Type:	Primary Antibodies
Applications:	WB
Recommended Dilution:	WB: 1:500~1:3000, ELISA: 1:10000
Reactivity:	Human, Mouse, Rat
Host:	Rabbit
Isotype:	IgG
Clonality:	Polyclonal
Immunogen:	The antiserum was produced against synthesized peptide derived from N-terminal of human ALDOA.
Formulation:	Phosphate buffered saline (without Mg ²⁺ and Ca ²⁺), pH 7.4, 150mM NaCl, 0.02% sodium azide and 50% glycerol.
Concentration:	lot specific
Purification:	The antibody was affinity-purified from rabbit antiserum by affinity-chromatography using epitope-specific immunogen.
Conjugation:	Unconjugated
Storage:	Store at -20°C as received.
Stability:	Stable for 12 months from date of receipt.
Gene Name:	aldolase, fructose-bisphosphate A
Database Link:	NP_000025 Entrez Gene 11674 MouseEntrez Gene 24189 RatEntrez Gene 226 Human P04075
Synonyms:	ALDA; GSD12; HEL-S-87p
Note:	ALDOA antibody detects endogenous levels of total ALDOA protein.
Protein Families:	Druggable Genome
Protein Pathways:	Fructose and mannose metabolism, Glycolysis / Gluconeogenesis, Metabolic pathways, Pentose phosphate pathway



[View online »](#)

Product images:



Western blot analysis of extracts from A549 cells, HT-29 cells and HeLa cells, using ALDOA antibody. The lane on the right is treated with the synthesized peptide.