

## Product datasheet for **TA313444**

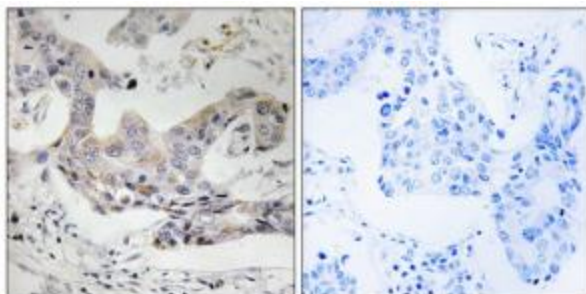
### ALDH3B1 Rabbit Polyclonal Antibody

#### Product data:

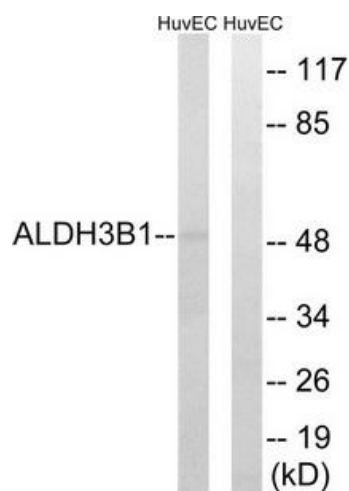
Product Type:	Primary Antibodies
Applications:	IHC, WB
Recommended Dilution:	WB: 1:500~1:3000, IHC: 1:50~1:100, ELISA: 1:40000
Reactivity:	Human
Host:	Rabbit
Isotype:	IgG
Clonality:	Polyclonal
Immunogen:	The antiserum was produced against synthesized peptide derived from internal of human ALDH3B1.
Formulation:	Phosphate buffered saline (without Mg <sup>2+</sup> and Ca <sup>2+</sup> ), pH 7.4, 150mM NaCl, 0.02% sodium azide and 50% glycerol.
Concentration:	lot specific
Purification:	The antibody was affinity-purified from rabbit antiserum by affinity-chromatography using epitope-specific immunogen.
Conjugation:	Unconjugated
Storage:	Store at -20°C as received.
Stability:	Stable for 12 months from date of receipt.
Gene Name:	aldehyde dehydrogenase 3 family member B1
Database Link:	<a href="#">NP_000685</a> <a href="#">Entrez Gene 221 Human P43353</a>
Synonyms:	ALDH4; ALDH7
Note:	ALDH3B1 antibody detects endogenous levels of total ALDH3B1 protein.
Protein Families:	Druggable Genome
Protein Pathways:	Drug metabolism - cytochrome P450, Glycolysis / Gluconeogenesis, Histidine metabolism, Metabolic pathways, Metabolism of xenobiotics by cytochrome P450, Phenylalanine metabolism, Tyrosine metabolism



[View online »](#)

**Product images:**


Immunohistochemistry analysis of paraffin-embedded human breast carcinoma tissue, using ALDH3B1 antibody. The picture on the right is treated with the synthesized peptide.



Western blot analysis of extracts from HuvEc cells, using ALDH3B1 antibody. The lane on the right is treated with the synthesized peptide.