

Product datasheet for **TA313441**

beta 1 Adrenergic Receptor (ADRB1) Rabbit Polyclonal Antibody

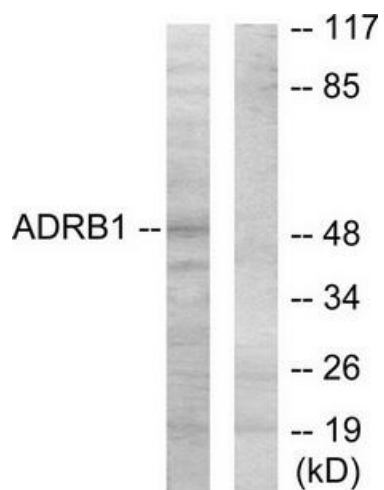
Product data:

Product Type:	Primary Antibodies
Applications:	WB
Recommended Dilution:	WB: 1:500~1:3000, ELISA: 1:20000
Reactivity:	Human, Mouse, Rat
Host:	Rabbit
Isotype:	IgG
Clonality:	Polyclonal
Immunogen:	The antiserum was produced against synthesized peptide derived from internal of human ADRB1 .
Formulation:	Phosphate buffered saline (without Mg ²⁺ and Ca ²⁺), pH 7.4, 150mM NaCl, 0.02% sodium azide and 50% glycerol.
Concentration:	lot specific
Purification:	The antibody was affinity-purified from rabbit antiserum by affinity-chromatography using epitope-specific immunogen.
Conjugation:	Unconjugated
Storage:	Store at -20°C as received.
Stability:	Stable for 12 months from date of receipt.
Gene Name:	adrenoceptor beta 1
Database Link:	NP_000675 Entrez Gene 11554 MouseEntrez Gene 24925 RatEntrez Gene 153 Human P08588
Synonyms:	ADRB1R; B1AR; BETA1AR; RHR
Note:	ADRB1 antibody detects endogenous levels of total ADRB1 protein.
Protein Families:	Druggable Genome, GPCR, Transmembrane
Protein Pathways:	Calcium signaling pathway, Dilated cardiomyopathy, Endocytosis, Gap junction, Neuroactive ligand-receptor interaction



[View online »](#)

Product images:



Western blot analysis of extracts from HT-29 cells, using ADRB1 antibody. The lane on the right is treated with the synthesized peptide.