

## Product datasheet for **TA313437**

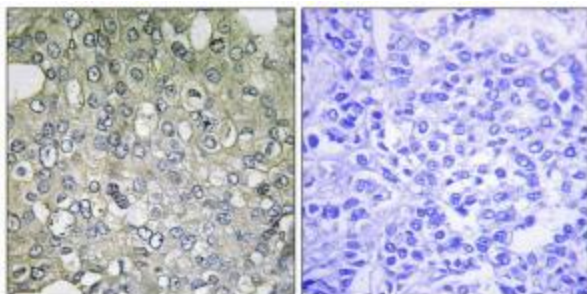
### alpha 1d Adrenergic Receptor (ADRA1D) Rabbit Polyclonal Antibody

#### Product data:

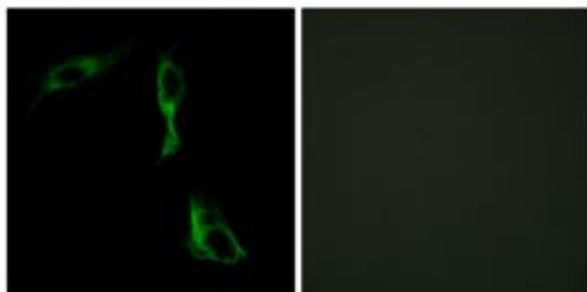
Product Type:	Primary Antibodies
Applications:	IF, IHC
Recommended Dilution:	IHC: 1:50~1:100, IF: 1:100~1:500, ELISA: 1:40000
Reactivity:	Human
Host:	Rabbit
Isotype:	IgG
Clonality:	Polyclonal
Immunogen:	The antiserum was produced against synthesized peptide derived from internal of human ADRA1D.
Formulation:	Phosphate buffered saline (without Mg <sup>2+</sup> and Ca <sup>2+</sup> ), pH 7.4, 150mM NaCl, 0.02% sodium azide and 50% glycerol.
Concentration:	lot specific
Purification:	The antibody was affinity-purified from rabbit antiserum by affinity-chromatography using epitope-specific immunogen.
Conjugation:	Unconjugated
Storage:	Store at -20°C as received.
Stability:	Stable for 12 months from date of receipt.
Gene Name:	adrenoceptor alpha 1D
Database Link:	<a href="#">NP_000669</a> <a href="#">Entrez Gene 146 Human</a> <a href="#">P25100</a>
Synonyms:	ADRA1; ADRA1A; ADRA1R; ALPHA1; DAR; dj779E11.2
Note:	ADRA1D antibody detects endogenous levels of total ADRA1D protein.
Protein Families:	Druggable Genome, GPCR, Transmembrane
Protein Pathways:	Calcium signaling pathway, Neuroactive ligand-receptor interaction, Vascular smooth muscle contraction



[View online »](#)

**Product images:**

Immunohistochemistry analysis of paraffin-embedded human breast carcinoma tissue using ADRA1D antibody. The picture on the right is treated with the synthesized peptide.



Immunofluorescence analysis of HeLa cells, using ADRA1D antibody. The picture on the right is treated with the synthesized peptide.