

Product datasheet for **TA313435**

PARP1 Rabbit Polyclonal Antibody

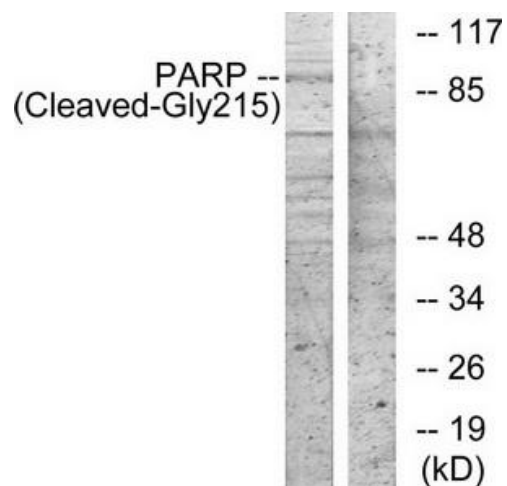
Product data:

Product Type:	Primary Antibodies
Applications:	WB
Recommended Dilution:	WB: 1:500~1:3000, ELISA: 1:1000
Reactivity:	Human
Host:	Rabbit
Isotype:	IgG
Clonality:	Polyclonal
Immunogen:	The antiserum was produced against synthesized peptide derived from human PARP.
Formulation:	Phosphate buffered saline (without Mg ²⁺ and Ca ²⁺), pH 7.4, 150mM NaCl, 0.02% sodium azide and 50% glycerol.
Concentration:	lot specific
Purification:	The antibody was affinity-purified from rabbit antiserum by affinity-chromatography using epitope-specific immunogen.
Conjugation:	Unconjugated
Storage:	Store at -20°C as received.
Stability:	Stable for 12 months from date of receipt.
Gene Name:	poly(ADP-ribose) polymerase 1
Database Link:	NP_001609 Entrez Gene 142 Human P09874
Synonyms:	ADPRT; ADPRT 1; ADPRT1; ARTD1; pADPRT-1; PARP; PARP-1; PPOL
Note:	PARP (Cleaved-Gly215) antibody detects endogenous levels of fragment of activated PARP resulting from cleavage adjacent to Gly215.
Protein Families:	Druggable Genome, Stem cell - Pluripotency, Transcription Factors
Protein Pathways:	Base excision repair



[View online »](#)

Product images:



Western blot analysis of extracts from 3T3 cells, treated with etoposide (25uM, 1 hour), using PARP (Cleaved-Gly215) antibody. The lane on the right is treated with the synthesized peptide.