

Product datasheet for **TA313425**

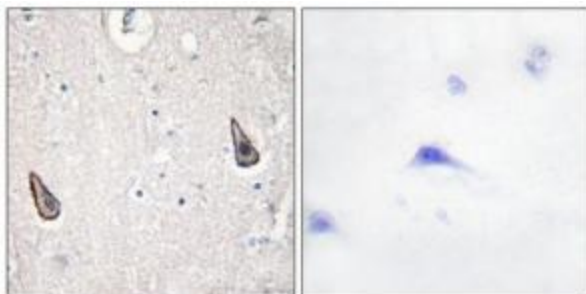
ADCY6 Rabbit Polyclonal Antibody

Product data:

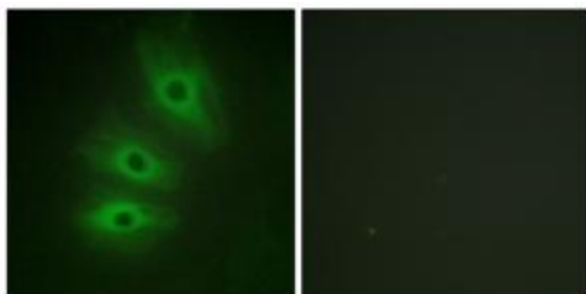
Product Type:	Primary Antibodies
Applications:	IF, IHC
Recommended Dilution:	IHC: 1:50~1:100, IF: 1:100~1:500, ELISA: 1:20000
Reactivity:	Human, Mouse, Rat
Host:	Rabbit
Isotype:	IgG
Clonality:	Polyclonal
Immunogen:	The antiserum was produced against synthesized peptide derived from internal of human ADCY5/6.
Formulation:	Phosphate buffered saline (without Mg ²⁺ and Ca ²⁺), pH 7.4, 150mM NaCl, 0.02% sodium azide and 50% glycerol.
Concentration:	lot specific
Purification:	The antibody was affinity-purified from rabbit antiserum by affinity-chromatography using epitope-specific immunogen.
Conjugation:	Unconjugated
Storage:	Store at -20°C as received.
Stability:	Stable for 12 months from date of receipt.
Gene Name:	adenylate cyclase 6
Database Link:	NP_056085 Entrez Gene 11512 Mouse Entrez Gene 25289 Rat Entrez Gene 112 Human O43306
Synonyms:	AC6; LCCS8
Note:	ADCY5/6 antibody detects endogenous levels of total ADCY5/6 protein.
Protein Families:	Druggable Genome, Transmembrane
Protein Pathways:	Chemokine signaling pathway, Dilated cardiomyopathy, Gap junction, GnRH signaling pathway, Melanogenesis, Oocyte meiosis, Progesterone-mediated oocyte maturation, Purine metabolism, Taste transduction, Vascular smooth muscle contraction



[View online »](#)

Product images:

Immunohistochemistry analysis of paraffin-embedded human brain tissue using ADCY5/6 antibody. The picture on the right is treated with the synthesized peptide.



Immunofluorescence analysis of HeLa cells, using ADCY5/6 antibody. The picture on the right is treated with the synthesized peptide.