

Product datasheet for **TA313424**

ADCY5 Rabbit Polyclonal Antibody

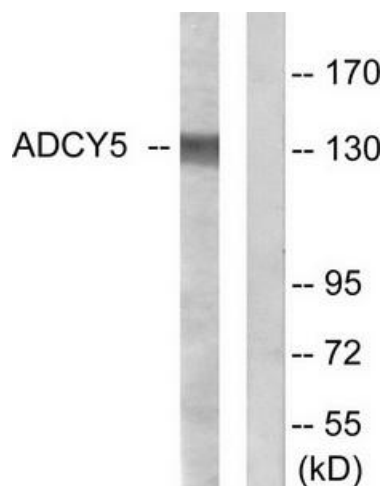
Product data:

Product Type:	Primary Antibodies
Applications:	WB
Recommended Dilution:	WB: 1:500~1:3000, ELISA: 1:10000
Reactivity:	Human, Mouse, Rat
Host:	Rabbit
Isotype:	IgG
Clonality:	Polyclonal
Immunogen:	The antiserum was produced against synthetic peptide derived from internal of human ADCY5/ADCY6. (UniProt O95622 and O43306).
Formulation:	Phosphate buffered saline (without Mg ²⁺ and Ca ²⁺), pH 7.4, 150mM NaCl, 0.02% sodium azide and 50% glycerol.
Concentration:	lot specific
Purification:	The antibody was affinity-purified from rabbit antiserum by affinity-chromatography using epitope-specific immunogen.
Conjugation:	Unconjugated
Storage:	Store at -20°C as received.
Stability:	Stable for 12 months from date of receipt.
Gene Name:	adenylate cyclase 5
Database Link:	NP_899200 Entrez Gene 64532 Rat Entrez Gene 224129 Mouse Entrez Gene 111 Human O95622
Synonyms:	AC5; FDFM
Note:	ADCY5 antibody detects endogenous levels of total ADCY5 protein.
Protein Families:	Druggable Genome, Transmembrane
Protein Pathways:	Chemokine signaling pathway, Dilated cardiomyopathy, Gap junction, GnRH signaling pathway, Melanogenesis, Oocyte meiosis, Progesterone-mediated oocyte maturation, Purine metabolism, Vascular smooth muscle contraction



[View online »](#)

Product images:



Western blot analysis of extracts from COLO205 cells, using ADCY5 antibody. The lane on the right is treated with the synthesized peptide.