

## Product datasheet for **TA313422**

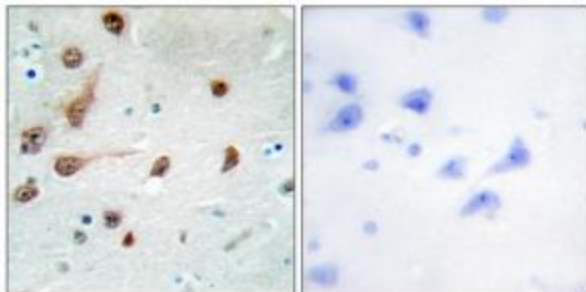
### ADAR1 (ADAR) Rabbit Polyclonal Antibody

#### Product data:

Product Type:	Primary Antibodies
Applications:	IHC
Recommended Dilution:	IHC: 1:50~1:100, ELISA: 1:20000
Reactivity:	Human, Mouse, Rat
Host:	Rabbit
Isotype:	IgG
Clonality:	Polyclonal
Immunogen:	The antiserum was produced against synthesized peptide derived from C-terminal of human ADAR1.
Formulation:	Phosphate buffered saline (without Mg <sup>2+</sup> and Ca <sup>2+</sup> ), pH 7.4, 150mM NaCl, 0.02% sodium azide and 50% glycerol.
Concentration:	lot specific
Purification:	The antibody was affinity-purified from rabbit antiserum by affinity-chromatography using epitope-specific immunogen.
Conjugation:	Unconjugated
Storage:	Store at -20°C as received.
Stability:	Stable for 12 months from date of receipt.
Gene Name:	adenosine deaminase, RNA-specific
Database Link:	<a href="#">NP_056656</a> <a href="#">Entrez Gene 56417 Mouse</a> <a href="#">Entrez Gene 81635 Rat</a> <a href="#">Entrez Gene 103 Human</a> <a href="#">P55265</a>
Synonyms:	ADAR1; AGS6; DRADA; DSH; DSRAD; G1P1; IFI-4; IFI4; K88DSRBP; P136
Note:	ADAR1 antibody detects endogenous levels of total ADAR1 protein.
Protein Families:	Druggable Genome
Protein Pathways:	Cytosolic DNA-sensing pathway



[View online »](#)

**Product images:**

Immunohistochemistry analysis of paraffin-embedded human brain tissue, using ADAR1 antibody. The picture on the right is treated with the synthesized peptide.