

Product datasheet for **TA313421**

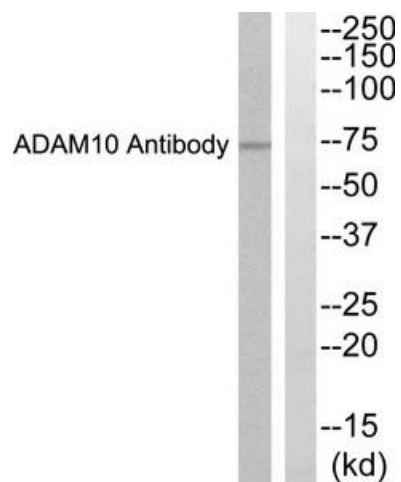
ADAM10 Rabbit Polyclonal Antibody

Product data:

Product Type:	Primary Antibodies
Applications:	WB
Recommended Dilution:	WB: 1:500~1:3000, ELISA: 1:10000
Reactivity:	Human, Mouse, Rat
Host:	Rabbit
Isotype:	IgG
Clonality:	Polyclonal
Immunogen:	The antiserum was produced against synthesized peptide derived from Internal of human ADAM10.
Formulation:	Phosphate buffered saline (without Mg ²⁺ and Ca ²⁺), pH 7.4, 150mM NaCl, 0.02% sodium azide and 50% glycerol.
Concentration:	lot specific
Purification:	The antibody was affinity-purified from rabbit antiserum by affinity-chromatography using epitope-specific immunogen.
Conjugation:	Unconjugated
Storage:	Store at -20°C as received.
Stability:	Stable for 12 months from date of receipt.
Gene Name:	ADAM metallopeptidase domain 10
Database Link:	NP_001101 Entrez Gene 11487 Mouse Entrez Gene 29650 Rat Entrez Gene 102 Human O14672
Synonyms:	AD10; AD18; CD156c; HsT18717; kuz; MADM; RAK
Note:	ADAM10 Antibody detects endogenous levels of total ADAM10 protein.
Protein Families:	Druggable Genome, Protease, Transmembrane
Protein Pathways:	Alzheimer's disease, Epithelial cell signaling in Helicobacter pylori infection



[View online »](#)

Product images:

Western blot analysis of extracts from K562 cells, using ADAM10 Antibody. The lane on the right is treated with the synthesized peptide.