

Product datasheet for **TA313419**

BAF53A (ACTL6A) Rabbit Polyclonal Antibody

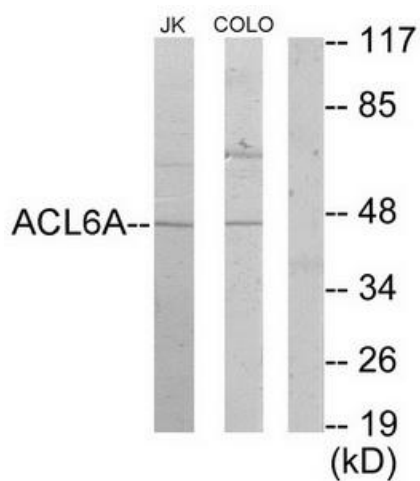
Product data:

Product Type:	Primary Antibodies
Applications:	IF, WB
Recommended Dilution:	WB: 1:500~1:3000, IF: 1:100~1:500, ELISA: 1:10000
Reactivity:	Human, Mouse, Rat
Host:	Rabbit
Isotype:	IgG
Clonality:	Polyclonal
Immunogen:	The antiserum was produced against synthesized peptide derived from internal of human ACL6A.
Formulation:	Phosphate buffered saline (without Mg ²⁺ and Ca ²⁺), pH 7.4, 150mM NaCl, 0.02% sodium azide and 50% glycerol.
Concentration:	lot specific
Purification:	The antibody was affinity-purified from rabbit antiserum by affinity-chromatography using epitope-specific immunogen.
Conjugation:	Unconjugated
Storage:	Store at -20°C as received.
Stability:	Stable for 12 months from date of receipt.
Gene Name:	actin like 6A
Database Link:	NP_004292 Entrez Gene 56456 MouseEntrez Gene 361925 RatEntrez Gene 86 Human O96019
Synonyms:	ACTL6; Arp4; ARPN-BETA; BAF53A; INO80K
Note:	ACL6A antibody detects endogenous levels of total ACL6A protein.
Protein Families:	Druggable Genome, Transcription Factors

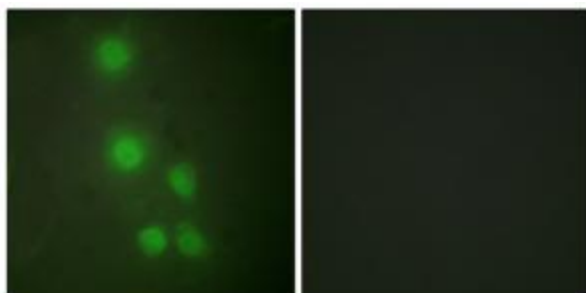


[View online »](#)

Product images:



Western blot analysis of extracts from Jurkat cells and COLO205 cells, using ACL6A antibody. The lane on the right is treated with the synthesized peptide.



Immunofluorescence analysis of HUVEC cells, using ACL6A antibody. The picture on the right is treated with the synthesized peptide.