

## Product datasheet for **TA313418**

### ACTG2 Rabbit Polyclonal Antibody

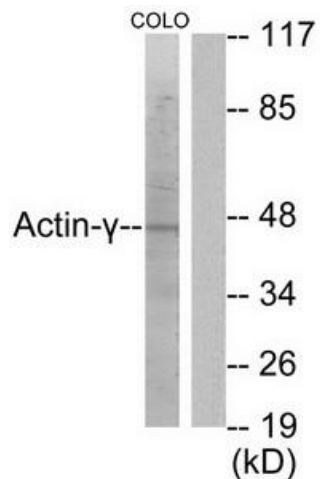
#### Product data:

Product Type:	Primary Antibodies
Applications:	IHC, WB
Recommended Dilution:	WB: 1:500~1:3000, IHC: 1:50~1:100, ELISA: 1:20000
Reactivity:	Human, Mouse, Rat
Host:	Rabbit
Isotype:	IgG
Clonality:	Polyclonal
Immunogen:	The antiserum was produced against synthesized peptide derived from human Actin-?2.
Formulation:	Phosphate buffered saline (without Mg <sup>2+</sup> and Ca <sup>2+</sup> ), pH 7.4, 150mM NaCl, 0.02% sodium azide and 50% glycerol.
Concentration:	lot specific
Purification:	The antibody was affinity-purified from rabbit antiserum by affinity-chromatography using epitope-specific immunogen.
Conjugation:	Unconjugated
Storage:	Store at -20°C as received.
Stability:	Stable for 12 months from date of receipt.
Gene Name:	actin, gamma 2, smooth muscle, enteric
Database Link:	<a href="#">NP_001606</a> <a href="#">Entrez Gene 11468 Mouse</a> <a href="#">Entrez Gene 25365 Rat</a> <a href="#">Entrez Gene 72 Human</a> <a href="#">P63267</a>
Synonyms:	ACT; ACTA3; ACTE; ACTL3; ACTSG; VSCM
Note:	Actin-.2 antibody detects endogenous levels of total Actin-.2 protein.
Protein Pathways:	Vascular smooth muscle contraction

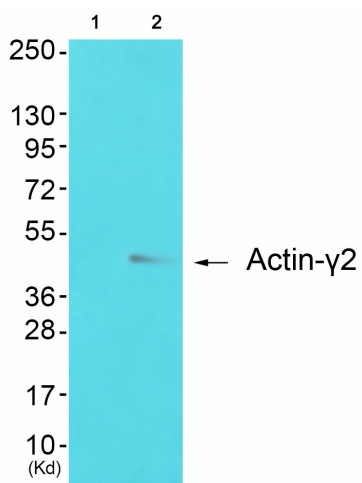


[View online »](#)

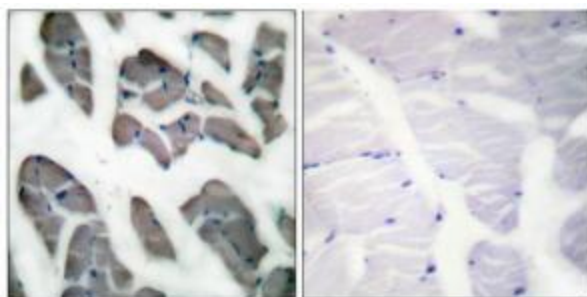
Product images:



Western blot analysis of extracts from COLO205 cells, using Actin-γ2 antibody. The lane on the right is treated with the synthesized peptide.



Western blot analysis of extracts from 293 cells (Lane 2), using Actin-γ2 Antibody. The lane on the left is treated with synthesized peptide.



Immunohistochemical analysis of paraffin-embedded human muscle tissue using Actin-γ2 antibody. The picture on the right is treated with the synthesized peptide.